

# CFTD2011

## LCD TV/DVD SERVICE MANUAL

### IMPORTANT INFORMATION

**WARNING:** TO REDUCE THE RISK OF FIRE OR ELECTRIC SHOCK,  
DO NOT EXPOSE THIS PRODUCT TO RAIN OR MOISTURE

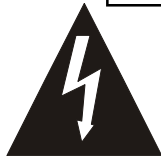


#### CAUTION

**RISK OF ELECTRIC SHOCK  
DO NOT OPEN**



**CAUTION: TO REDUCE THE RISK OF ELECTRIC SHOCK,  
DO NOT REMOVE COVER  
NO USER-SERVICEABLE PARTS INSIDE.  
REFER SERVICING TO QUALIFIED SERVICE PERSONNEL**



The lightning flash with arrowhead symbol, within an equilateral triangle, is intended to alert the user to the presence of uninsulated "dangerous voltage" within the product's enclosure that may be of sufficient magnitude to constitute a risk of electric shock to persons.



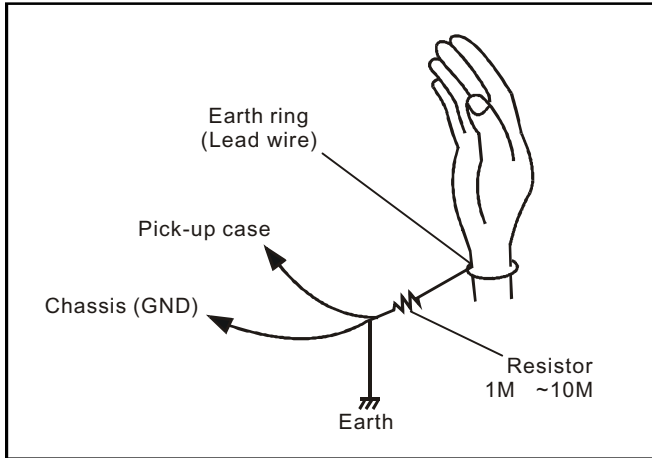
The exclamation point within a triangle is intended to alert the user to the presence of important operating and maintenance(servicing)instruction accompanying the product.

# CONTENT

Safety Precaution .....	page 1~ 1
Technical Specifications .....	page 2~ 2
Trouble Shooting Flow Chart .....	page 3~ 5
Block Diagram .....	page 6~ 6
Wiring Diagram .....	page 7~ 7
Main Board .....	page 8~ 22
Control Board .....	page 23~ 25
DVD Board .....	page 26~ 32
Replacement Part List .....	page 33~ 33
Firmware Upgrade method .....	page 34~ 43
Exploded Drawing .....	page 44~ 44

## SAFETY PRECAUTION

- In order to prevent you from any possible injury caused by high voltage, please do not touch the inverter directly while repairing the unit.
- While adjusting the unit, be sure to ground connected instruments and your body to prevent static electricity destroying the ICs.



# TECHNICAL SPECIFICATIONS

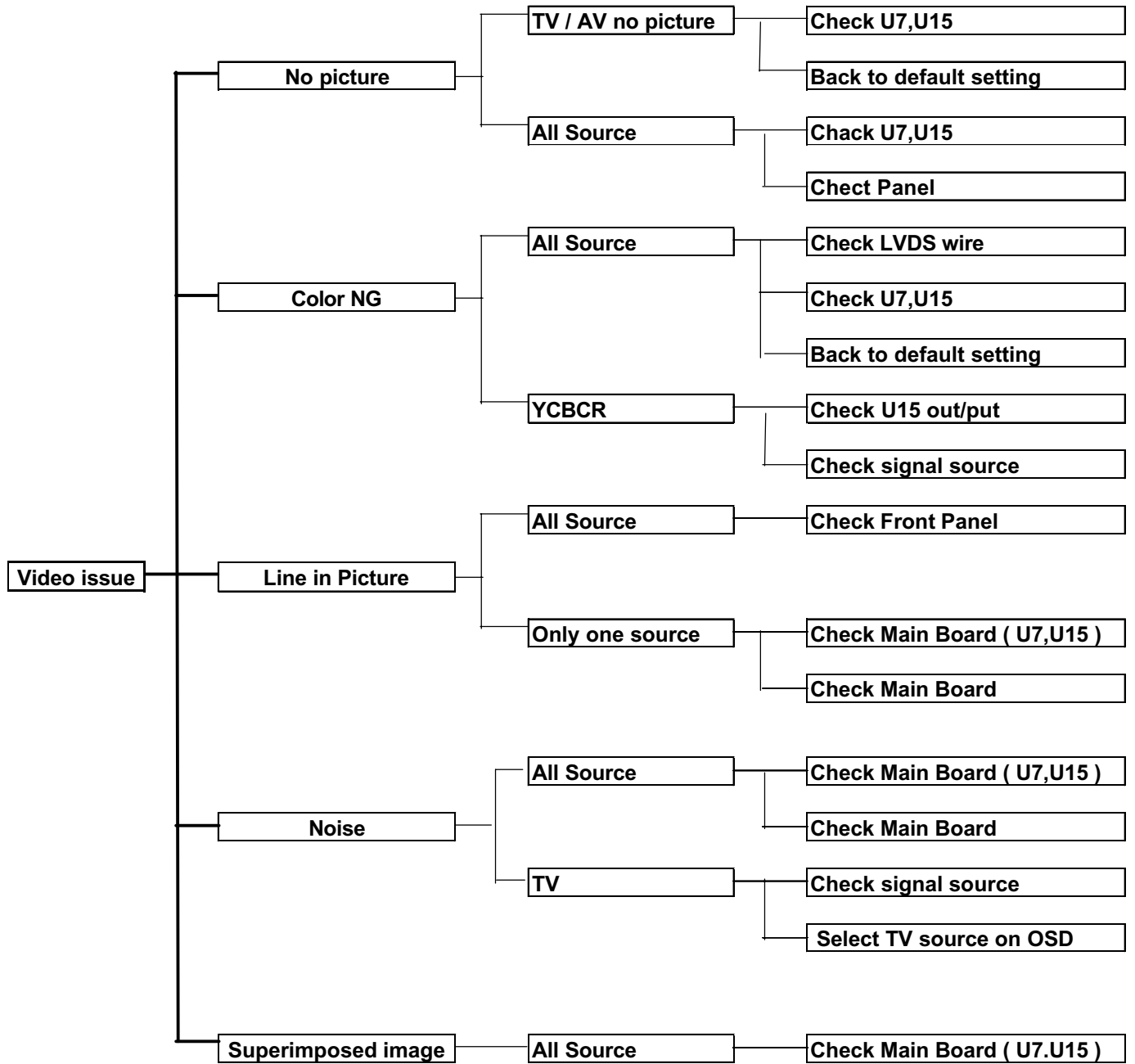
## LCD TV section

Screen Size .....	20 TFT-LCD Panel
Aspect Ratio .....	4:3
Contrast Ratio .....	600:1
Brightness .....	500 cd/m <sup>2</sup>
High color saturation .....	NTSC 7.5 %
Resolution .....	480I/480P
Pixel Pitch(HXV) .....	0.2125mm 0.6375mm
Display colors .....	0.26M
Response Time(Tr/Tf) .....	3/5ms
Viewing Angles Horizontal .....	160 Degree
Viewing Angles Vertical .....	140 Degree
TV Tuning Compatible .....	NTSC 181 Channels
Special Features:	
.....	MTS
.....	Sleep Timer
.....	4H comb filter
.....	Deinterlace
.....	V-chip
.....	Closed Caption
.....	Full function remote control
Input Terminals:	
.....	Antenna
.....	AV1
.....	S-VIDEO1
.....	Component
Power Consumption .....	90W (MAX)
Power Supply .....	100~240 VAC at 1.5A
Operation Temperature .....	0°C ~45°C
Storage Temperature .....	From -10°C To 60°C

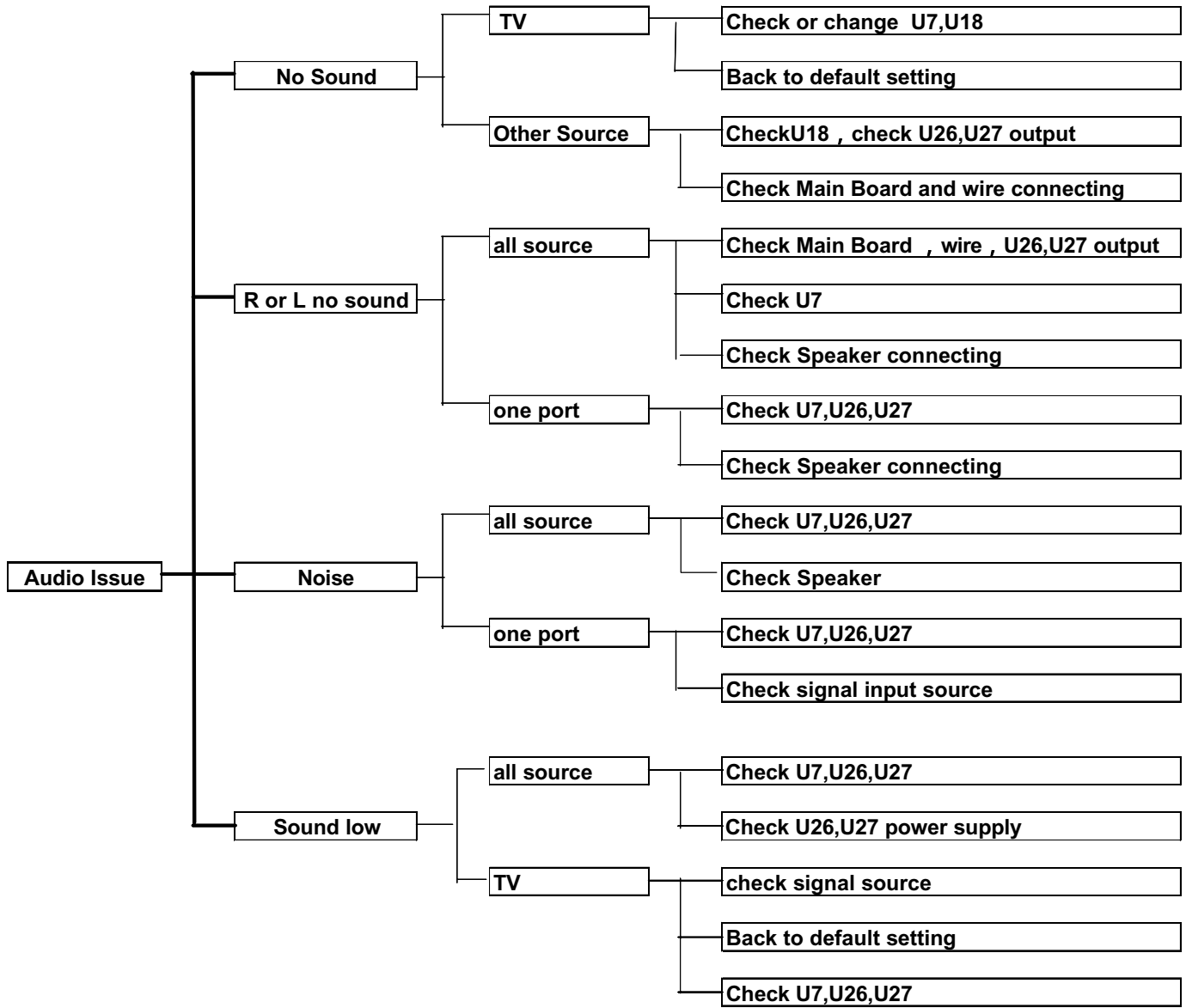
## DVD section

Laser type .....	Semiconductor laser, Wavelength 650nm
Signal system .....	PAL625/50, NTSC520/60
Video output level .....	1 Vp-p (75 ohm)
Video Y output level .....	1 Vp-p (75 ohm)
Video C output level .....	286 m Vp-p (75 ohm)
Horizontal resolution .....	480 lines
S/N ratio .....	60 dB
Audio frequency .....	DVD (PCM) 20Hz-22kHz (+/-1.0 dB)
Response .....	CD 20Hz-20kHz (+/-1.0dB)
S/N ratio .....	80dB
Dynamic range .....	DVD (PCM): 85dB; CD:85dB
Audio L/R .....	2V 1kHz 0dB
Distortion .....	0.1%

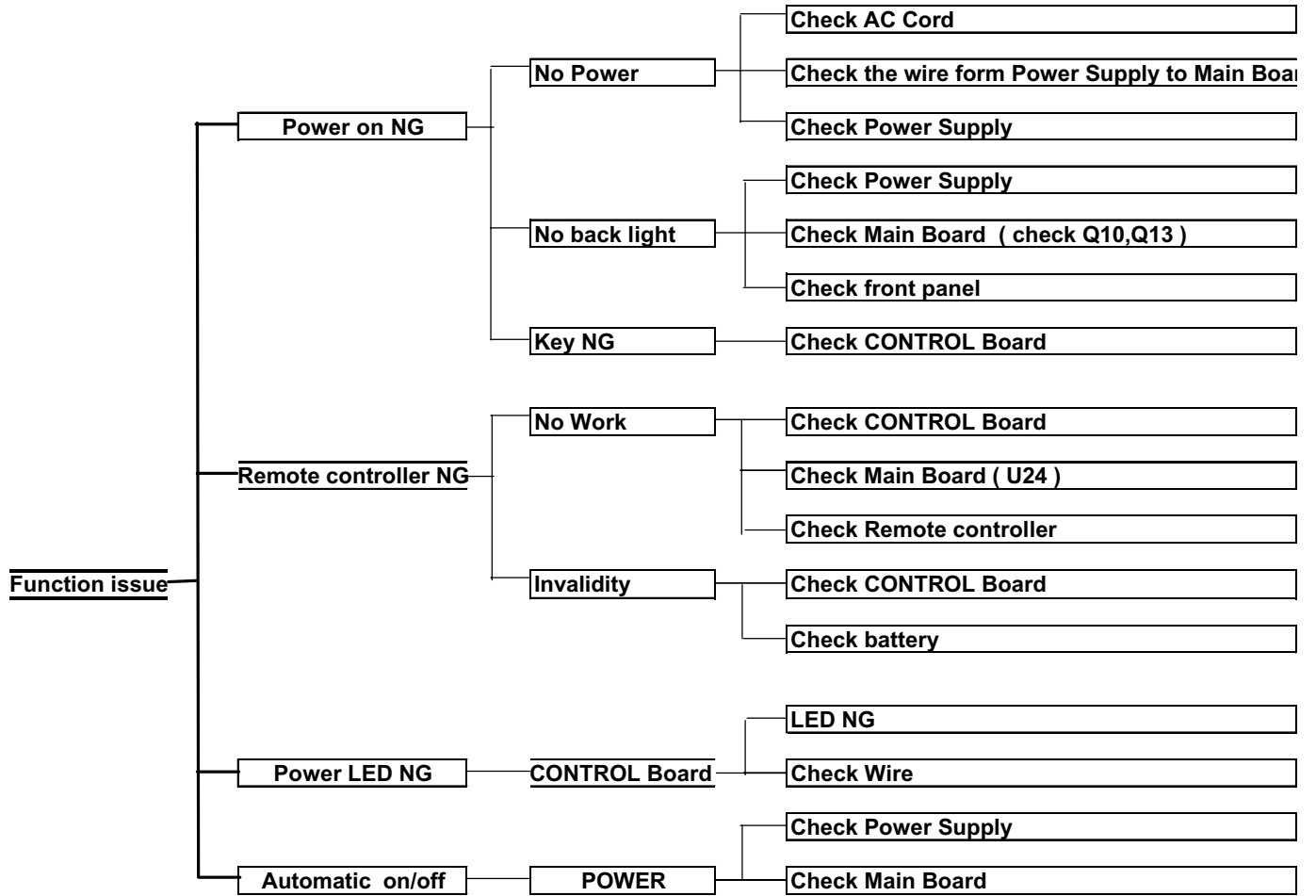
# TROUBLE SHOOTING FLOW CHART (1)



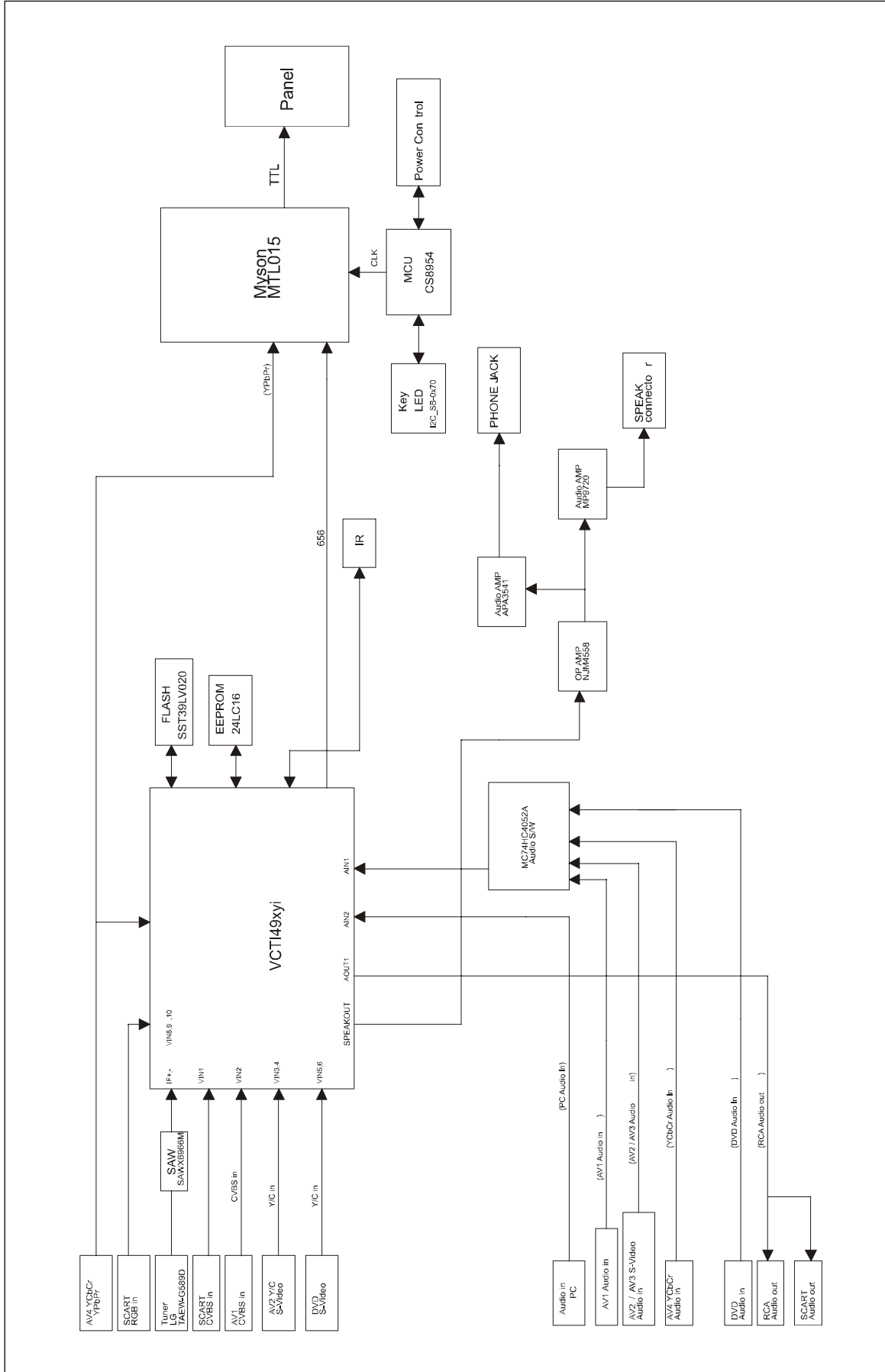
# TROUBLE SHOOTING FLOW CHART (2)



# TROUBLE SHOOTING FLOW CHART (3)

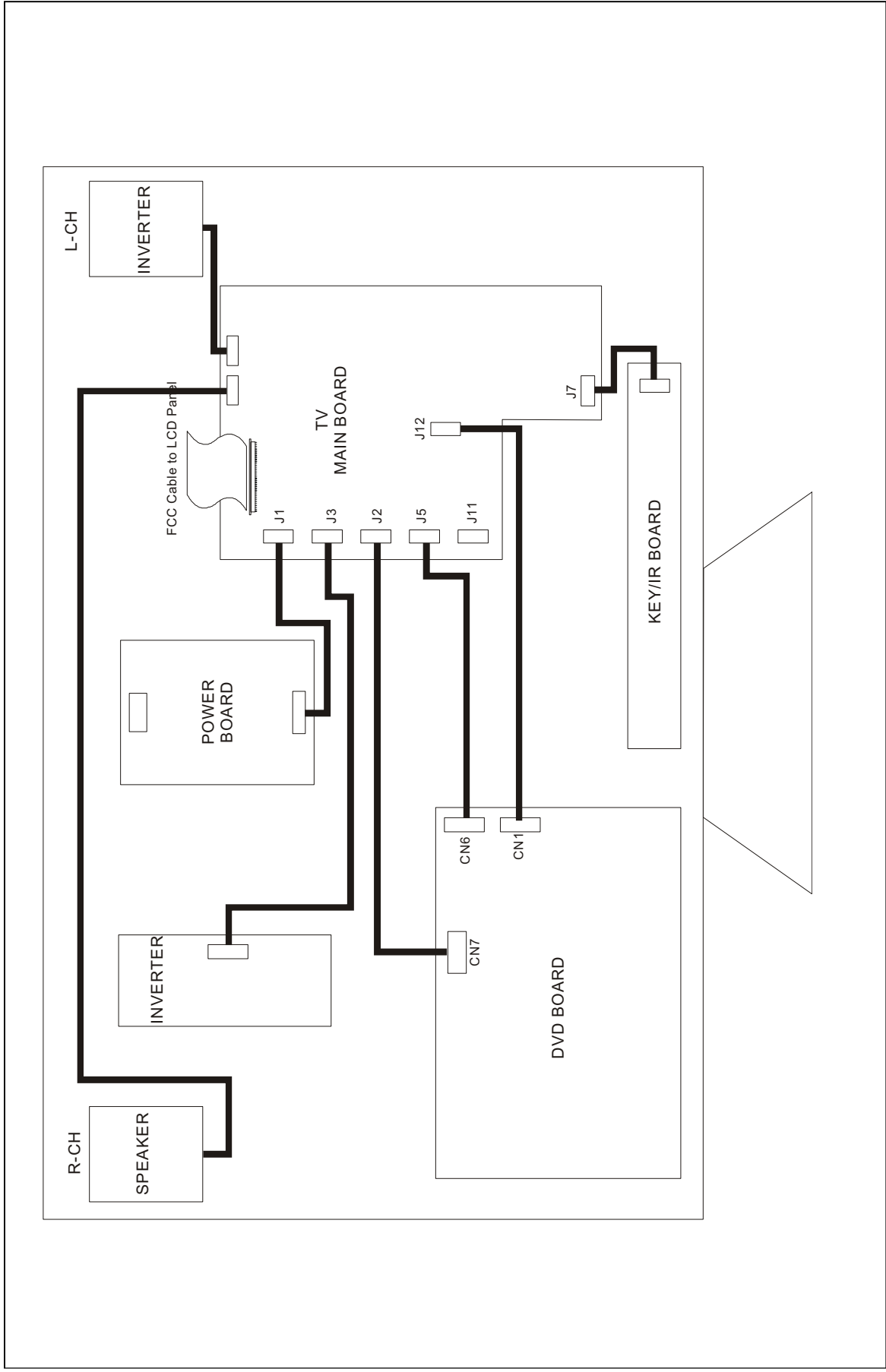


# BLOCK DIAGRAM





**WIRING DIAGRAM**

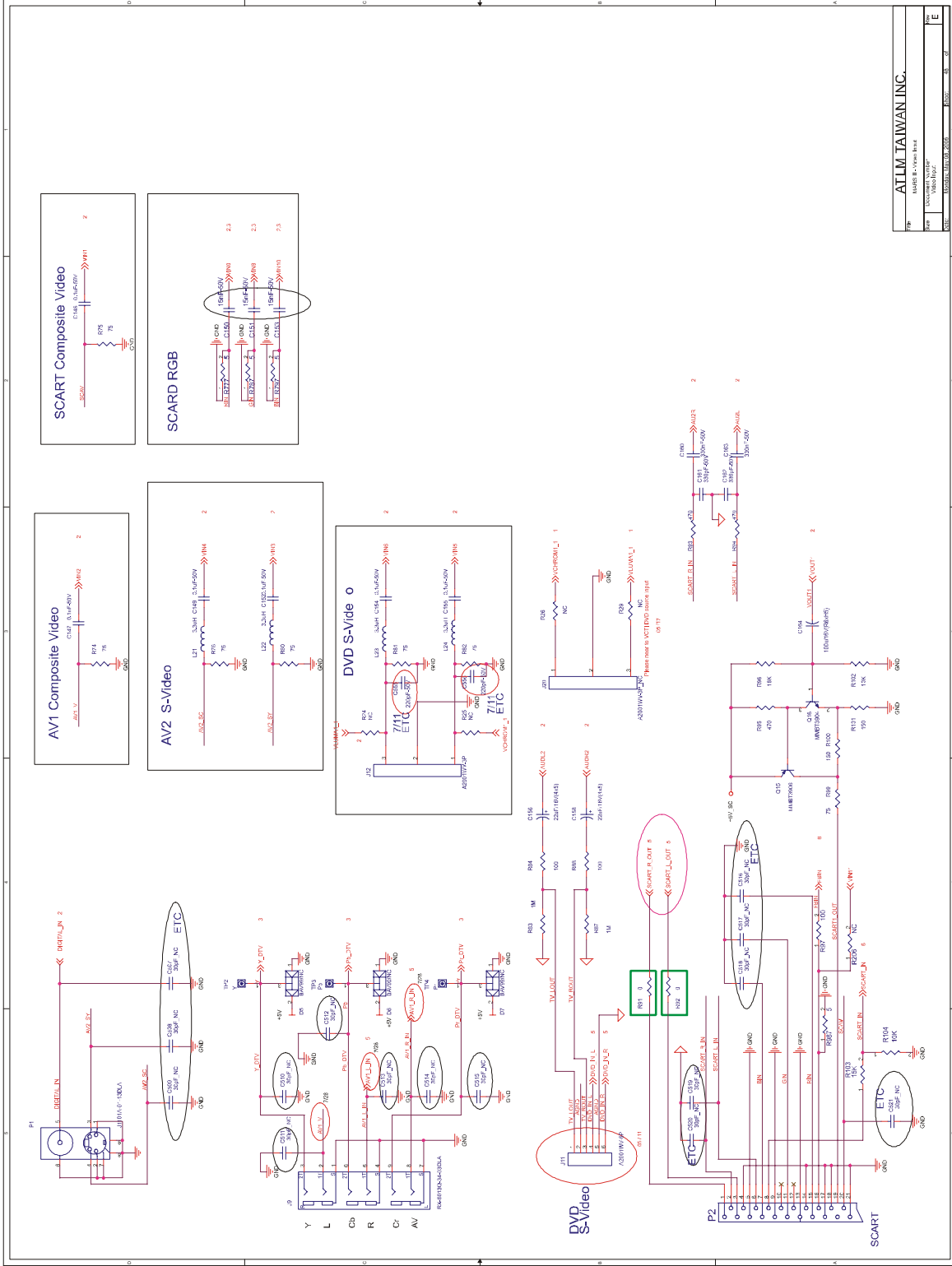






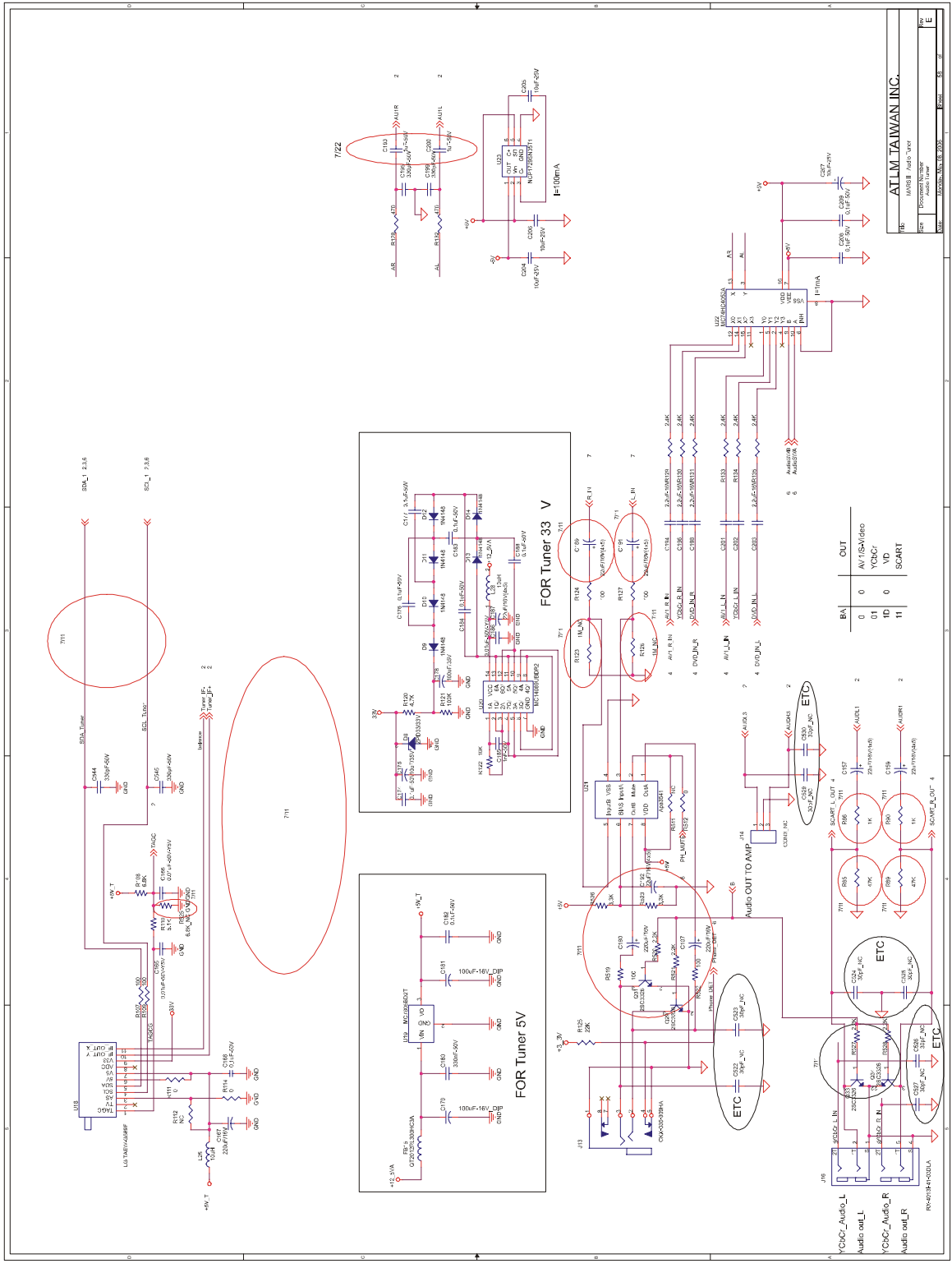


# MAIN BOARD CIRCUIT (4)



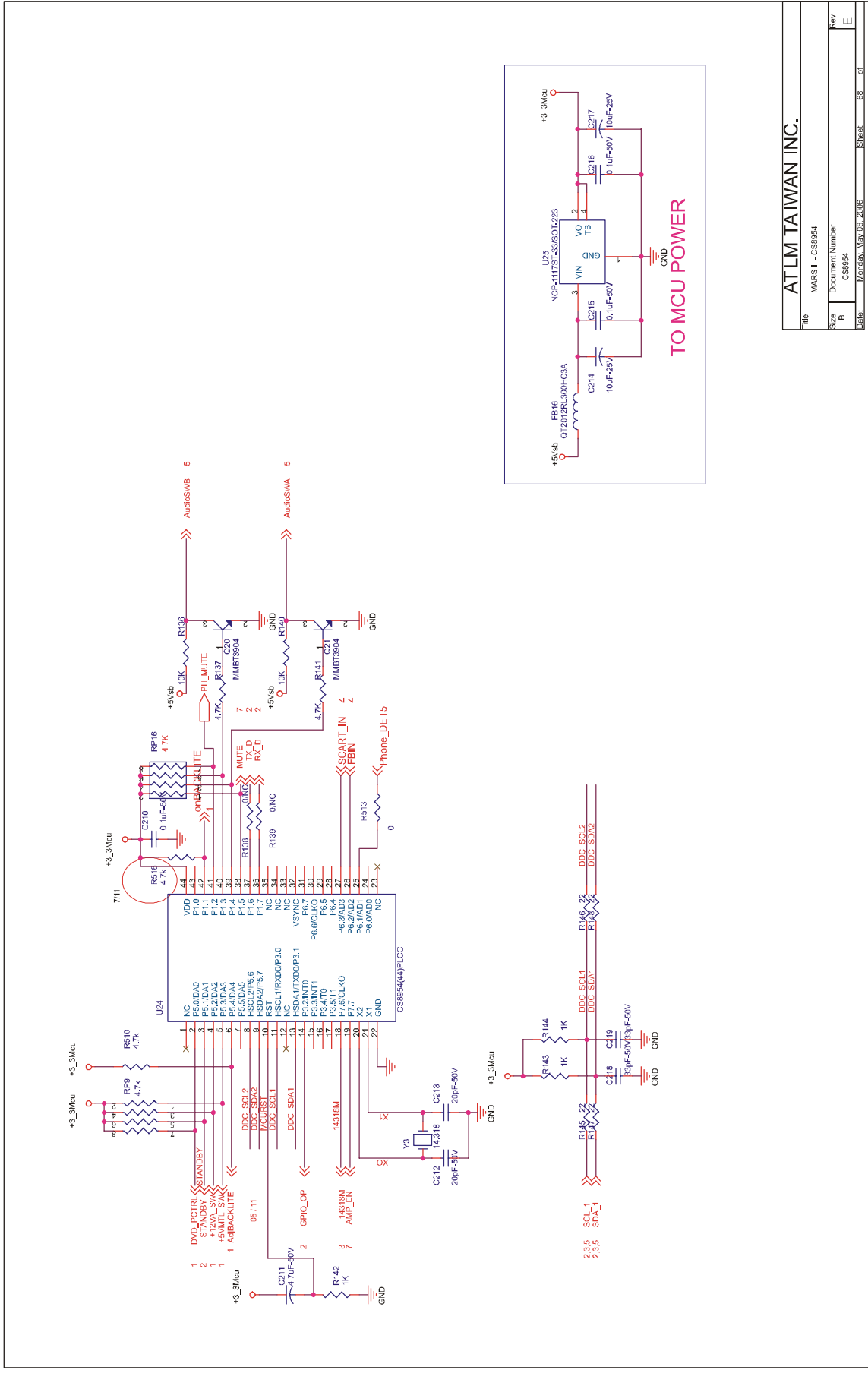
ATLTM TAIWAN INC.	
Model	ATLTM-T-Video-Board
Version	00000001
Date	2000/11/10
Page	11

# MAIN BOARD CIRCUIT (5)



REV	DATE	BY	CHK
01	15/03/2022	ATLM	ATLM
02	15/03/2022	ATLM	ATLM
03	15/03/2022	ATLM	ATLM
04	15/03/2022	ATLM	ATLM
05	15/03/2022	ATLM	ATLM
06	15/03/2022	ATLM	ATLM
07	15/03/2022	ATLM	ATLM
08	15/03/2022	ATLM	ATLM
09	15/03/2022	ATLM	ATLM
10	15/03/2022	ATLM	ATLM
11	15/03/2022	ATLM	ATLM
12	15/03/2022	ATLM	ATLM
13	15/03/2022	ATLM	ATLM
14	15/03/2022	ATLM	ATLM
15	15/03/2022	ATLM	ATLM
16	15/03/2022	ATLM	ATLM
17	15/03/2022	ATLM	ATLM
18	15/03/2022	ATLM	ATLM
19	15/03/2022	ATLM	ATLM
20	15/03/2022	ATLM	ATLM
21	15/03/2022	ATLM	ATLM
22	15/03/2022	ATLM	ATLM
23	15/03/2022	ATLM	ATLM
24	15/03/2022	ATLM	ATLM
25	15/03/2022	ATLM	ATLM
26	15/03/2022	ATLM	ATLM
27	15/03/2022	ATLM	ATLM
28	15/03/2022	ATLM	ATLM
29	15/03/2022	ATLM	ATLM
30	15/03/2022	ATLM	ATLM
31	15/03/2022	ATLM	ATLM
32	15/03/2022	ATLM	ATLM
33	15/03/2022	ATLM	ATLM
34	15/03/2022	ATLM	ATLM
35	15/03/2022	ATLM	ATLM
36	15/03/2022	ATLM	ATLM
37	15/03/2022	ATLM	ATLM
38	15/03/2022	ATLM	ATLM
39	15/03/2022	ATLM	ATLM
40	15/03/2022	ATLM	ATLM
41	15/03/2022	ATLM	ATLM
42	15/03/2022	ATLM	ATLM
43	15/03/2022	ATLM	ATLM
44	15/03/2022	ATLM	ATLM
45	15/03/2022	ATLM	ATLM
46	15/03/2022	ATLM	ATLM
47	15/03/2022	ATLM	ATLM
48	15/03/2022	ATLM	ATLM
49	15/03/2022	ATLM	ATLM
50	15/03/2022	ATLM	ATLM
51	15/03/2022	ATLM	ATLM
52	15/03/2022	ATLM	ATLM
53	15/03/2022	ATLM	ATLM
54	15/03/2022	ATLM	ATLM
55	15/03/2022	ATLM	ATLM
56	15/03/2022	ATLM	ATLM
57	15/03/2022	ATLM	ATLM
58	15/03/2022	ATLM	ATLM
59	15/03/2022	ATLM	ATLM
60	15/03/2022	ATLM	ATLM
61	15/03/2022	ATLM	ATLM
62	15/03/2022	ATLM	ATLM
63	15/03/2022	ATLM	ATLM
64	15/03/2022	ATLM	ATLM
65	15/03/2022	ATLM	ATLM
66	15/03/2022	ATLM	ATLM
67	15/03/2022	ATLM	ATLM
68	15/03/2022	ATLM	ATLM
69	15/03/2022	ATLM	ATLM
70	15/03/2022	ATLM	ATLM
71	15/03/2022	ATLM	ATLM
72	15/03/2022	ATLM	ATLM
73	15/03/2022	ATLM	ATLM
74	15/03/2022	ATLM	ATLM
75	15/03/2022	ATLM	ATLM
76	15/03/2022	ATLM	ATLM
77	15/03/2022	ATLM	ATLM
78	15/03/2022	ATLM	ATLM
79	15/03/2022	ATLM	ATLM
80	15/03/2022	ATLM	ATLM
81	15/03/2022	ATLM	ATLM
82	15/03/2022	ATLM	ATLM
83	15/03/2022	ATLM	ATLM
84	15/03/2022	ATLM	ATLM
85	15/03/2022	ATLM	ATLM
86	15/03/2022	ATLM	ATLM
87	15/03/2022	ATLM	ATLM
88	15/03/2022	ATLM	ATLM
89	15/03/2022	ATLM	ATLM
90	15/03/2022	ATLM	ATLM
91	15/03/2022	ATLM	ATLM
92	15/03/2022	ATLM	ATLM
93	15/03/2022	ATLM	ATLM
94	15/03/2022	ATLM	ATLM
95	15/03/2022	ATLM	ATLM
96	15/03/2022	ATLM	ATLM
97	15/03/2022	ATLM	ATLM
98	15/03/2022	ATLM	ATLM
99	15/03/2022	ATLM	ATLM
100	15/03/2022	ATLM	ATLM

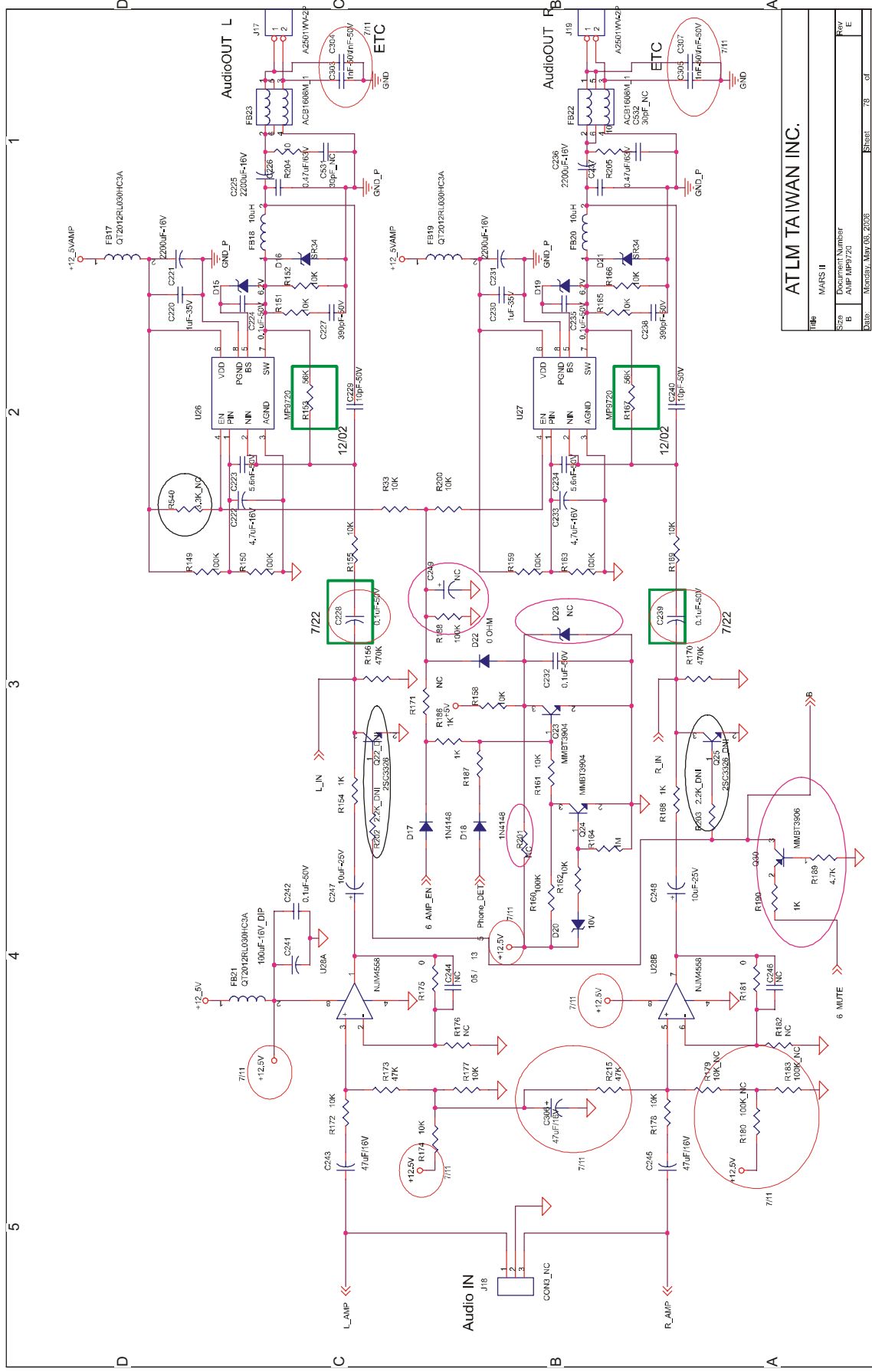
# MAIN BOARD CIRCUIT (6)



ATLM TAIWAN INC.

Title	IVARS II - CS8954
Size	B
Document Number	CS8954
Date	Monday, May 05, 2008
Sheet	05
of	E

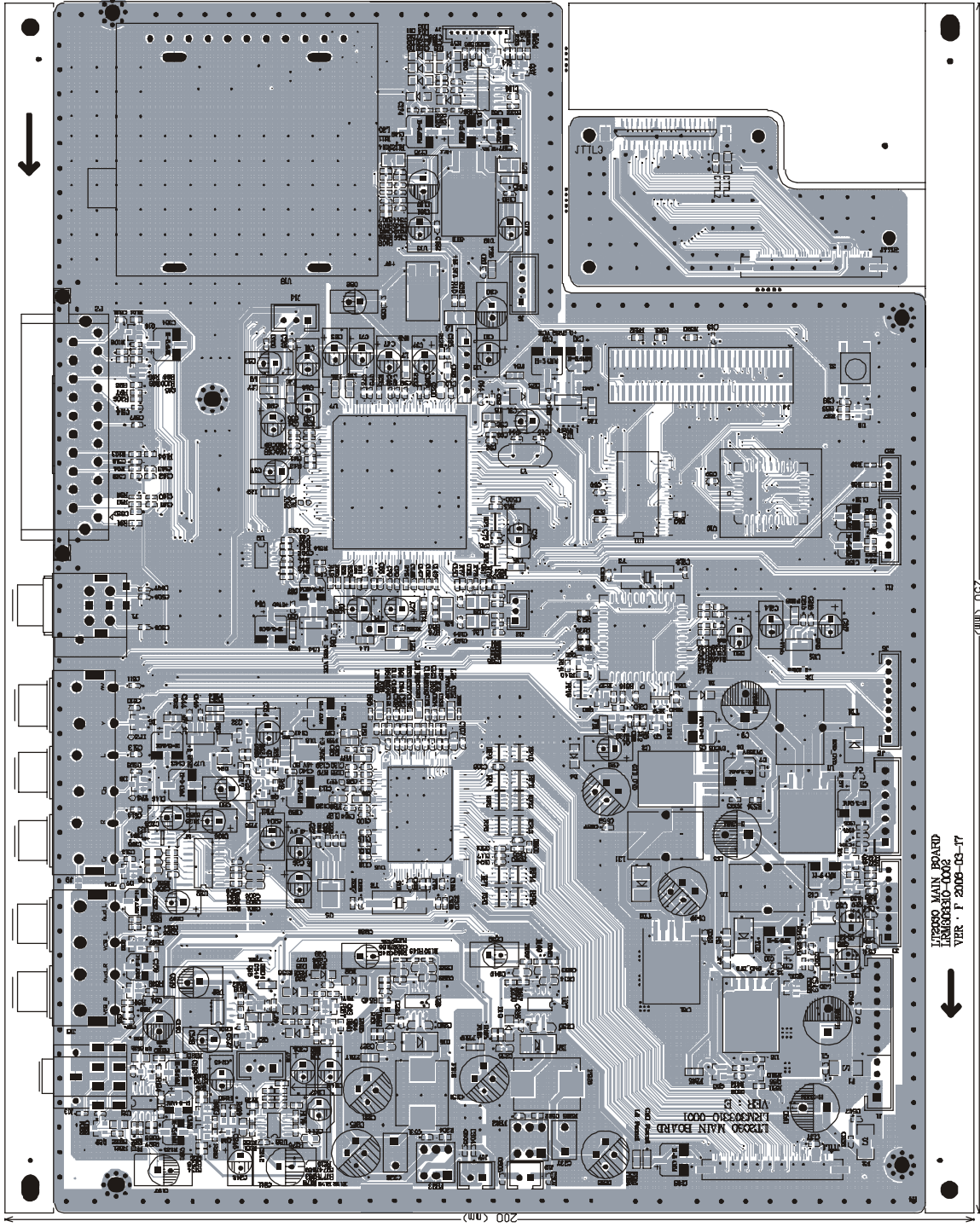
# MAIN BOARD CIRCUIT (7)



ATLM TAIWAN INC.			
Rev#	MARS II		
Size	Document Number		
B	AMP (UP)720		
Date	Monday, May 08, 2006		
	Sheet	78	of



**MAIN BOARD PCB-TOP**



Top Overlay

L12000 MAIN BOARD  
L12000-0002  
VER. 1 2005-03-17

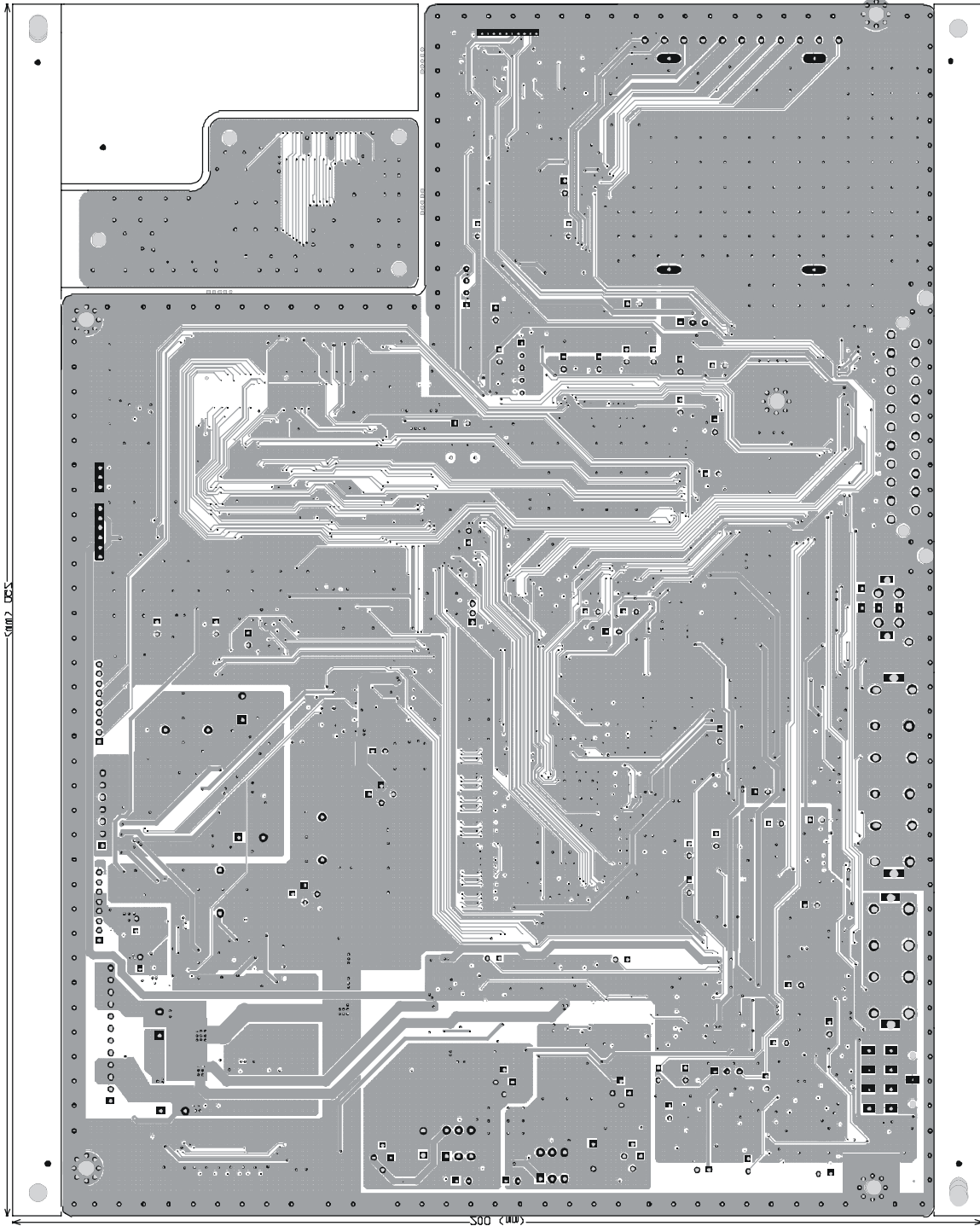
15

15

250 (mm)

200 (mm)

**MAIN BOARD PCB-BOTTOM**



BOTTOM LAYER

# MAIN BOARD PARTS LIST

RESISTOR		
R107	QCF015030-1010	100 OHM 1/10W 5% 0603
R108	QCF015030-6820	6.8K OHM 1/10W 5% 0603
R109	QCF015030-1010	100 OHM 1/10W 5% 0603
R110	QCF015030-5120	5.1K OHM 1/10W 5% 0603
R111	QCF015030-0000	0 OHM 1/10W 5% 0603
R114	QCF015030-0000	0 OHM 1/10W 5% 0603
R12	QCF015030-1040	100K OHM 1/10W 5% 0603
R120	QCF015030-4720	4.7K OHM 1/10W 5% 0603
R121	QCF015030-1040	100K OHM 1/10W 5% 0603
R122	QCF015030-1030	10K OHM 1/10W 5% 0603
R124	QCF015030-1010	100 OHM 1/10W 5% 0603
R125	QCF015030-2230	22K OHM 1/10W 5% 0603
R127	QCF015030-1010	100 OHM 1/10W 5% 0603
R128	QCF015030-4710	470 OHM 1/10W 5% 0603
R129	QCF015030-2420	2.4K OHM 1/10W 5% 0603
R130	QCF015030-2420	2.4K OHM 1/10W 5% 0603
R131	QCF015030-2420	2.4K OHM 1/10W 5% 0603
R132	QCF015030-4710	470 OHM 1/10W 5% 0603
R133	QCF015030-2420	2.4K OHM 1/10W 5% 0603
R134	QCF015030-2420	2.4K OHM 1/10W 5% 0603
R135	QCF015030-2420	2.4K OHM 1/10W 5% 0603
R136	QCF015030-1030	10K OHM 1/10W 5% 0603
R137	QCF015030-4720	4.7K OHM 1/10W 5% 0603
R14	QCF015030-4720	4.7K OHM 1/10W 5% 0603
R140	QCF015030-1030	10K OHM 1/10W 5% 0603
R141	QCF015030-4720	4.7K OHM 1/10W 5% 0603
R142	QCF015030-1020	1K OHM 1/10W 5% 0603
R143	QCF015030-1020	1K OHM 1/10W 5% 0603
R144	QCF015030-1020	1K OHM 1/10W 5% 0603
R145	QCF015030-2200	22 OHM 1/10W 5% 0603
R146	QCF015030-2200	22 OHM 1/10W 5% 0603
R147	QCF015030-2200	22 OHM 1/10W 5% 0603
R148	QCF015030-2200	22 OHM 1/10W 5% 0603
R149	QCF015030-1040	100K OHM 1/10W 5% 0603
R150	QCF015030-1040	100K OHM 1/10W 5% 0603
R151	QCF015030-1030	10K OHM 1/10W 5% 0603
R152	QCF015030-1030	10K OHM 1/10W 5% 0603
R153	QCF015030-5630	56K OHM 1/10W 5% 0603
R154	QCF015030-1020	1K OHM 1/10W 5% 0603
R155	QCF015030-1030	10K OHM 1/10W 5% 0603
R156	QCF015030-4740	470K OHM 1/10W 5% 0603
R158	QCF015030-1030	10K OHM 1/10W 5% 0603
R159	QCF015030-1040	100K OHM 1/10W 5% 0603
R160	QCF015030-1040	100K OHM 1/10W 5% 0603
R161	QCF015030-1030	10K OHM 1/10W 5% 0603
R162	QCF015030-1030	10K OHM 1/10W 5% 0603
R163	QCF015030-1040	100K OHM 1/10W 5% 0603
R164	QCF015030-1050	1M OHM 1/10W 5% 0603
R165	QCF015030-1030	10K OHM 1/10W 5% 0603

RESISTOR		
R166	QCF015030-1030	10K OHM 1/10W 5% 0603
R167	QCF015030-5630	56K OHM 1/10W 5% 0603
R168	QCF015030-1020	1K OHM 1/10W 5% 0603
R169	QCF015030-1030	10K OHM 1/10W 5% 0603
R17	QCF015030-4730	47K OHM 1/10W 5% 0603
R170	QCF015030-4740	470K OHM 1/10W 5% 0603
R172	QCF015030-1030	10K OHM 1/10W 5% 0603
R173	QCF015030-4730	47K OHM 1/10W 5% 0603
R174	QCF015030-1030	10K OHM 1/10W 5% 0603
R175	QCF015030-2220	2.2K OHM 1/10W 5% 0603
R177	QCF015030-1030	10K OHM 1/10W 5% 0603
R178	QCF015030-1030	10K OHM 1/10W 5% 0603
R18	QCF015030-1040	100K OHM 1/10W 5% 0603
R181	QCF015030-2220	2.2K OHM 1/10W 5% 0603
R186	QCF015030-1020	1K OHM 1/10W 5% 0603
R187	QCF015030-1020	1K OHM 1/10W 5% 0603
R188	QCF015030-1040	100K OHM 1/10W 5% 0603
R189	QCF015030-4720	4.7K OHM 1/10W 5% 0603
R190	QCF015030-1020	1K OHM 1/10W 5% 0603
R200	QCF015030-1030	10K OHM 1/10W 5% 0603
R202	QCF015030-2220	2.2K OHM 1/10W 5% 0603
R203	QCF015030-2220	2.2K OHM 1/10W 5% 0603
R204	QCF015030-1000	10 OHM 1/10W 5% 0603
R205	QCF015030-1000	10 OHM 1/10W 5% 0603
R21	QCF015030-4720	4.7K OHM 1/10W 5% 0603
R210	QCF015030-4730	47K OHM 1/10W 5% 0603
R211	QCF015030-1040	100K OHM 1/10W 5% 0603
R212	QCF015030-4720	4.7K OHM 1/10W 5% 0603
R213	QCF015030-4730	47K OHM 1/10W 5% 0603
R215	QCF015030-4730	47K OHM 1/10W 5% 0603
R22	QCF015030-0000	0 OHM 1/10W 5% 0603
R27	QCF015030-4720	4.7K OHM 1/10W 5% 0603
R28	QCF015030-4720	4.7K OHM 1/10W 5% 0603
R30	QCF015030-4720	4.7K OHM 1/10W 5% 0603
R32	QCF015030-1020	1K OHM 1/10W 5% 0603
R33	QCF015030-1030	10K OHM 1/10W 5% 0603
R34	QCF015030-4720	4.7K OHM 1/10W 5% 0603
R35	QCF015030-1020	1K OHM 1/10W 5% 0603
R36	QCF015030-4720	4.7K OHM 1/10W 5% 0603
R37	QCF015030-4700	47 OHM 1/10W 5% 0603
R38	QCF015030-0000	0 OHM 1/10W 5% 0603
R39	QCF015030-1020	1K OHM 1/10W 5% 0603
R40	QCF015030-0000	0 OHM 1/10W 5% 0603
R41	QCF015030-0000	0 OHM 1/10W 5% 0603
R42	QCF015030-0000	0 OHM 1/10W 5% 0603
R43	QCF015030-3320	3.3K OHM 1/10W 5% 0603
R44	QCF015030-3320	3.3K OHM 1/10W 5% 0603
R45	QCF015030-4700	47 OHM 1/10W 5% 0603
R46	QCF015030-2200	22 OHM 1/10W 5% 0603

# MAIN BOARD PARTS LIST

## RESISTOR

R47	QCF015030-2200	22 OHM 1/10W 5% 0603
R48	QCF015030-4730	47K OHM 1/10W 5% 0603
R49	QCF015030-2200	22 OHM 1/10W 5% 0603
R50	QCF015030-2200	22 OHM 1/10W 5% 0603
R500	QCF015030-4700	47 OHM 1/10W 5% 0603
R503	QCF015030-4730	47K OHM 1/10W 5% 0603
R504	QCF015030-4720	4.7K OHM 1/10W 5% 0603
R51	QCF015030-1020	1K OHM 1/10W 5% 0603
R510	QCF015030-4720	4.7K OHM 1/10W 5% 0603
R512	QCF015030-0000	0 OHM 1/10W 5% 0603
R513	QCF015030-0000	0 OHM 1/10W 5% 0603
R516	QCF015030-1820	1.8K OHM 1/10W 5% 0603
R517	QCF015030-1050	1M OHM 1/10W 5% 0603
R519	QCF085020-1010	100 OHM 1/8W 5% 0805
R52	QCF015030-1020	1K OHM 1/10W 5% 0603
R520	QCF015030-2220	2.2K OHM 1/10W 5% 0603
R521	QCF015030-2220	2.2K OHM 1/10W 5% 0603
R522	QCF085020-1010	100 OHM 1/8W 5% 0805
R523	QCF015030-3320	3.3K OHM 1/10W 5% 0603
R524	QCF015030-1040	100K OHM 1/10W 5% 0603
R526	QCF015030-3320	3.3K OHM 1/10W 5% 0603
R527	QCF015030-2220	2.2K OHM 1/10W 5% 0603
R528	QCF015030-2220	2.2K OHM 1/10W 5% 0603
R529	QCF015030-0000	0 OHM 1/10W 5% 0603
R530	QCF015030-0000	0 OHM 1/10W 5% 0603
R531	QCF015030-0000	0 OHM 1/10W 5% 0603
R532	QCF015030-0000	0 OHM 1/10W 5% 0603
R533	QCF015030-1030	10K OHM 1/10W 5% 0603
R534	QCF015030-2220	2.2K OHM 1/10W 5% 0603
R535	QCF011030-2200	220 OHM 1/10W 1% 0603
R536	QCF011030-1200	120 OHM 1/10W 1% 0603
R537	QCF015030-0000	0 OHM 1/10W 5% 0603
R538	QCF015030-0000	0 OHM 1/10W 5% 0603
R539	QCF015030-0000	0 OHM 1/10W 5% 0603
R56	QCF015030-4720	4.7K OHM 1/10W 5% 0603
R57	QCF015030-4710	470 OHM 1/10W 5% 0603
R58	QCF015030-4720	4.7K OHM 1/10W 5% 0603
R59	QCF015030-4730	47K OHM 1/10W 5% 0603
R61	QCF015030-7500	75 OHM 1/10W 5% 0603
R62	QCF015030-7500	75 OHM 1/10W 5% 0603
R64	QCF015030-7500	75 OHM 1/10W 5% 0603
R65	QCF015030-7500	75 OHM 1/10W 5% 0603
R67	QCF015030-7500	75 OHM 1/10W 5% 0603
R68	QCF015030-7500	75 OHM 1/10W 5% 0603
R70	QCF015030-3320	3.3K OHM 1/10W 5% 0603
R71	QCF015030-2200	22 OHM 1/10W 5% 0603
R72	QCF015030-2200	22 OHM 1/10W 5% 0603
R73	QCF015030-2200	22 OHM 1/10W 5% 0603
R74	QCF015030-7500	75 OHM 1/10W 5% 0603

## RESISTOR

R75	QCF015030-7500	75 OHM 1/10W 5% 0603
R76	QCF015030-7500	75 OHM 1/10W 5% 0603
R77	QCF015030-7500	75 OHM 1/10W 5% 0603
R78	QCF015030-7500	75 OHM 1/10W 5% 0603
R79	QCF015030-7500	75 OHM 1/10W 5% 0603
R80	QCF015030-7500	75 OHM 1/10W 5% 0603
R81	QCF015030-7500	75 OHM 1/10W 5% 0603
R82	QCF015030-7500	75 OHM 1/10W 5% 0603
R83	QCF015030-1050	1M OHM 1/10W 5% 0603
R84	QCF015030-1010	100 OHM 1/10W 5% 0603
R85	QCF015030-4730	47K OHM 1/10W 5% 0603
R86	QCF015030-1020	1K OHM 1/10W 5% 0603
R87	QCF015030-1050	1M OHM 1/10W 5% 0603
R88	QCF015030-1010	100 OHM 1/10W 5% 0603
R89	QCF015030-4730	47K OHM 1/10W 5% 0603
R9	QCF015030-4730	47K OHM 1/10W 5% 0603
R90	QCF015030-1020	1K OHM 1/10W 5% 0603
RP1	QCA165340-0000	0 OHM 1/16W 5% 0603 8P4R
RP16	QCA165340-4720	4.7K OHM 1/16W 5% 0603
RP2	QCA165340-0000	0 OHM 1/16W 5% 0603 8P4R
RP3	QCA165340-3300	33 OHM 1/16W 5% 0603 8P4F
RP4	QCA165340-3300	33 OHM 1/16W 5% 0603 8P4F
RP5	QCA165340-3300	33 OHM 1/16W 5% 0603 8P4F
RP6	QCA165340-3300	33 OHM 1/16W 5% 0603 8P4F
RP7	QCA165340-3300	33 OHM 1/16W 5% 0603 8P4F
RP8	QCA165340-3300	33 OHM 1/16W 5% 0603 8P4F
RP9	QCA165340-4720	4.7K OHM 1/16W 5% 0603

## CAPACITOR

C1	PXL439670-1040	0.1uF 50V +80% -20%
C10	PBE039542-1011	CHIP VER 100 uF 16V 20%
C100	PXL439670-1040	0.1uF 50V +80% -20%
C101	PXL439670-1040	0.1uF 50V +80% -20%
C102	PXL439670-1040	0.1uF 50V +80% -20%
C103	PXL439670-1040	0.1uF 50V +80% -20%
C104	PXL439670-1040	0.1uF 50V +80% -20%
C105	PXL439670-1040	0.1uF 50V +80% -20%
C106	PXL439670-1040	0.1uF 50V +80% -20%
C107	PXL439670-1040	0.1uF 50V +80% -20%
C108	PXL439670-1040	0.1uF 50V +80% -20%
C109	PXL456470-3310	330pF 50V 10%
C11	PXL439670-1040	0.1uF 50V +80% -20%
C110	PXL439670-1040	0.1uF 50V +80% -20%
C111	PXL456470-3310	330pF 50V 10%
C112	PYL439630-1060	10uF 10V +80-20%
C113	PXL439670-1040	0.1uF 50V +80% -20%
C114	PXL439670-1040	0.1uF 50V +80% -20%
C115	PXL439670-1040	0.1uF 50V +80% -20%
C116	PXL439670-1040	0.1uF 50V +80% -20%

# MAIN BOARD PARTS LIST

CAPACITOR			CAPACITOR		
C117	PXL439670-1040	0.1uF 50V +80% -20%	C175	PBE039560-1000	VER. ELECT 10 uF 35V 20%
C118	PXL439670-1040	0.1uF 50V +80% -20%	C176	PXL439670-1040	0.1uF 50V +80% -20%
C119	PXL439670-1040	0.1uF 50V +80% -20%	C177	PXL439670-1040	0.1uF 50V +80% -20%
C12	PBE039542-1011	CHIP VER 100 uF 16V 20%	C178	PBE039562-1011	CHIP VER. 100 uF 35V 20%
C120	PYL439630-1060	10uF 10V +80-20%	C179	PME039540-1010	100uF16V20%SIZE=5x11mm
C121	PXL439670-1040	0.1uF 50V +80% -20%	C180	PXL439640-3340	0.33 uF 16V +80-20%
C122	PXL439670-1040	0.1uF 50V +80% -20%	C180	PXL439670-3340	0.33 uF 50V +80-20%
C123	PXL439670-1040	0.1uF 50V +80% -20%	C181	PME039540-1010	100uF16V20%SIZE=5x11mm
C124	PXL439670-1040	0.1uF 50V +80% -20%	C182	PXL439670-1040	0.1uF 50V +80% -20%
C125	PXL456470-3310	330pF 50V 10%	C183	PXL439670-1040	0.1uF 50V +80% -20%
C126	PYL439630-1060	10uF 10V +80-20%	C184	PXL439670-1040	0.1uF 50V +80% -20%
C127	PXL439670-1040	0.1uF 50V +80% -20%	C185	PXL456470-1020	0.001 uF 50V 10%
C128	PXL456470-3930	0.039 uF 50V 10%	C186	PXL439670-1030	;0.01 uF 50V +80-20%
C129	PXL456470-3920	0.0039 uF 50V 10%	C187	PBE039542-2201	22 uF 16V 20% 85°C
C13	PVE039550-1020	1000uF 25V 20% 85°C 10x17	C188	PXL439670-1040	0.1uF 50V +80% -20%
C130	PXL439670-1040	0.1uF 50V +80% -20%	C189	PBE039542-2201	22 uF 16V 20% 85°C
C131	PXL439670-1040	0.1uF 50V +80% -20%	C190	PME039540-2210	220 uF 16V 20% 6.3x11mm
C132	PXL456470-1020	0.001 uF 50V 10%	C191	PBE039542-2201	22 uF 16V 20% 85°C
C133	PXL410370-2200	22 pF 50V 5%	C192	PBE039542-2201	22 uF 16V 20% 85°C
C133	PXL456470-2200	22 pF 50V 10%	C193	PYL439670-1050	1 uF 50V +80-20%
C134	PXL410370-2200	22 pF 50V 5%	C194	PYL439640-2250	2.2uF 16V +80-20%
C134	PXL456470-2200	22 pF 50V 10%	C195	PXL456470-3310	330pF 50V 10%
C135	PXL410370-2000	20 pF 50V 5%	C196	PYL439640-2250	2.2uF 16V +80-20%
C136	PXL410370-2000	20 pF 50V 5%	C197	PME039540-2210	220 uF 16V 20% 6.3x11mm
C137	PXL439670-1040	0.1uF 50V +80% -20%	C198	PYL439640-2250	2.2uF 16V +80-20%
C138	PBE039542-1011	CHIP VER 100 uF 16V 20%	C199	PXL456470-3310	330pF 50V 10%
C139	PBE039542-1011	CHIP VER 100 uF 16V 20%	C2	PVE039550-1020	1000uF 25V 20% 85°C 10x17
C140	PXL439670-1040	0.1uF 50V +80% -20%	C200	PYL439670-1050	1 uF 50V +80-20%
C141	PXL439670-1040	0.1uF 50V +80% -20%	C201	PYL439640-2250	2.2uF 16V +80-20%
C142	PBE039542-1011	CHIP VER 100 uF 16V 20%	C202	PYL439640-2250	2.2uF 16V +80-20%
C143	PBE039542-1011	CHIP VER 100 uF 16V 20%	C203	PYL439640-2250	2.2uF 16V +80-20%
C144	PXL439670-1040	0.1uF 50V +80% -20%	C204	PME039550-1000	10 uF 25V 20% 5x11mm
C145	PXL439670-1040	0.1uF 50V +80% -20%	C205	PME039550-1000	10 uF 25V 20% 5x11mm
C146	PBE039542-1011	CHIP VER 100 uF 16V 20%	C206	PME039550-1000	10 uF 25V 20% 5x11mm
C147	PXL439670-1040	0.1uF 50V +80% -20%	C207	PME039550-1000	10 uF 25V 20% 5x11mm
C148	PXL439670-1040	0.1uF 50V +80% -20%	C208	PXL439670-1040	0.1uF 50V +80% -20%
C149	PXL439670-1040	0.1uF 50V +80% -20%	C209	PXL439670-1040	0.1uF 50V +80% -20%
C152	PXL439670-1040	0.1uF 50V +80% -20%	C210	PXL439670-1040	0.1uF 50V +80% -20%
C154	PXL439670-1040	0.1uF 50V +80% -20%	C211	PME039570-4790	4.7 uF 50V 20% SIZE=5x11mm
C155	PXL439670-1040	0.1uF 50V +80% -20%	C212	PXL410370-2000	20 pF 50V 5%
C156	PBE039542-2201	22 uF 16V 20% 85°C	C213	PXL410370-2000	20 pF 50V 5%
C157	PBE039542-2201	22 uF 16V 20% 85°C	C214	PME039550-1000	10 uF 25V 20% 5x11mm
C158	PBE039542-2201	22 uF 16V 20% 85°C	C215	PXL439670-1040	0.1uF 50V +80% -20%
C159	PBE039542-2201	22 uF 16V 20% 85°C	C216	PXL439670-1040	0.1uF 50V +80% -20%
C165	PXL439670-1030	;0.01 uF 50V +80-20%	C217	PME039550-1000	10 uF 25V 20% 5x11mm
C166	PXL439670-1030	;0.01 uF 50V +80-20%	C218	PXL410370-3300	33 pF 50V 5%
C167	PME039540-2210	220 uF 16V 20% 6.3x11mm	C219	PXL410370-3300	33 pF 50V 5%
C168	PXL439670-1040	0.1uF 50V +80% -20%	C22	PXL439670-1040	0.1uF 50V +80% -20%
C174	PXL439670-1040	0.1uF 50V +80% -20%	C220	PZL456460-1050	1uF 35V 10%

# MAIN BOARD PARTS LIST

CAPACITOR		
C221	PVE039542-2220	2200uF16V20% 85°C D10xL25
C222	PZL439640-4750	4.7 uF 16V +80-20%
C223	PYL456470-5620	0.0056 uF 50V 10%
C224	PXL439670-1040	0.1uF 50V +80% -20%
C225	PVE039542-2220	2200uF16V20% 85°C D10xL25
C226	PVX270483-4740	0.47 uF 63V10% -55'~+125'
C227	PYL410370-3910	390 pF 50V 5%
C228	PME039570-1080	0.1 uF 50V 20% 5x11mm
C229	PYL410370-1000	10 pF 50 V 5%
C23	PME039540-4700	47 uF16V20%SIZE=5x11mm
C230	PZL456460-1050	1uF 35V 10%
C231	PVE039542-2220	2200uF16V20% 85°C D10xL25
C232	PXL439670-1040	0.1uF 50V +80% -20%
C233	PZL439640-4750	4.7 uF 16V +80-20%
C234	PYL456470-5620	0.0056 uF 50V 10%
C235	PXL439670-1040	0.1uF 50V +80% -20%
C236	PVE039542-2220	2200uF16V20% 85°C D10xL25
C237	PVX270483-4740	0.47 uF 63V10% -55'~+125'
C238	PYL410370-3910	390 pF 50V 5%
C239	PME039570-1080	0.1 uF 50V 20% 5x11mm
C240	PYL410370-1000	10 pF 50 V 5%
C241	PME039540-1010	100uF16V20%SIZE=5x11mm
C242	PXL439670-1040	0.1uF 50V +80% -20%
C243	PME039540-4700	47 uF16V20%SIZE=5x11mm
C245	PME039540-4700	47 uF16V20%SIZE=5x11mm
C247	PME039550-1000	10 uF 25V 20% 5x11mm
C248	PME039550-1000	10 uF 25V 20% 5x11mm
C25	PME039540-1010	100uF16V20%SIZE=5x11mm
C26	PME039540-1010	100uF16V20%SIZE=5x11mm
C27	PXL439670-1040	0.1uF 50V +80% -20%
C28	PXL439670-1040	0.1uF 50V +80% -20%
C29	PXL439670-1040	0.1uF 50V +80% -20%
C3	PBE039542-1011	CHIP VER 100 uF 16V 20%
C30	PME039540-4700	47 uF16V20%SIZE=5x11mm
C301	PXL439670-1040	0.1uF 50V +80% -20%
C302	PXL439670-1040	0.1uF 50V +80% -20%
C303	PXL456470-1020	0.001 uF 50V 10%
C304	PXL456470-1020	0.001 uF 50V 10%
C305	PXL456470-1020	0.001 uF 50V 10%
C306	PME039540-4700	47 uF16V20%SIZE=5x11mm
C307	PXL456470-1020	0.001 uF 50V 10%
C31	PME039540-1010	100uF16V20%SIZE=5x11mm
C34	PXL439670-1040	0.1uF 50V +80% -20%
C35	PXL439670-1040	0.1uF 50V +80% -20%
C37	PME039570-3390	3.3 uF 50V 20%
C38	PXL439670-1040	0.1uF 50V +80% -20%
C39	PXL439670-1040	0.1uF 50V +80% -20%
C4	PXL439670-1040	0.1uF 50V +80% -20%
C40	PXL439670-1040	0.1uF 50V +80% -20%

CAPACITOR		
C41	PXL439670-1040	0.1uF 50V +80% -20%
C42	PME039570-4790	4.7 uF 50V 20% SIZE=5x11mm
C43	PXL439670-1040	0.1uF 50V +80% -20%
C44	PXL410370-3000	30 pF 50V 5%
C45	PXL410370-3000	30 pF 50V 5%
C46	PXL439670-1040	0.1uF 50V +80% -20%
C47	PME039550-1000	10 uF 25V 20% 5x11mm
C48	PXL456470-1520	0.0015 uF 50V 10%
C49	PXL410370-4710	470 pF 50V 5%
C5	PBE039542-1011	CHIP VER 100 uF 16V 20%
C50	PXL439670-1040	0.1uF 50V +80% -20%
C501	PXL410370-120Z	12 pF 50V 5%
C503	PXL439670-1040	0.1uF 50V +80% -20%
C51	PME039550-1000	10 uF 25V 20% 5x11mm
C52	PXL439670-1040	0.1uF 50V +80% -20%
C53	PME039550-1000	10 uF 25V 20% 5x11mm
C536	PXL439670-1040	0.1uF 50V +80% -20%
C537	PXL439670-1040	0.1uF 50V +80% -20%
C538	PME039550-1000	10 uF 25V 20% 5x11mm
C539	PME039540-1010	100uF16V20%SIZE=5x11mm
C54	PXL456470-1520	0.0015 uF 50V 10%
C540	PXL439670-1040	0.1uF 50V +80% -20%
C541	PXL439670-1040	0.1uF 50V +80% -20%
C542	PME039550-1000	10 uF 25V 20% 5x11mm
C544	PXL456470-3310	330pF 50V 10%
C545	PXL456470-3310	330pF 50V 10%
C546	PXL439670-1030	;0.01 uF 50V +80-20%
C549	PRE039540-4710	470uF 16V 20% D8xL11mm
C55	PXL410370-4710	470 pF 50V 5%
C550	PXL439670-1040	0.1uF 50V +80% -20%
C551	PVE039550-1020	1000uF 25V 20% 85°C 10x17
C552	PVE039550-1020	1000uF 25V 20% 85°C 10x17
C553	PXL439670-1040	0.1uF 50V +80% -20%
C554	PME039540-4700	47 uF16V20%SIZE=5x11mm
C555	PXL456470-2210	220pF 50V 10%
C556	PXL456470-2210	220pF 50V 10%
C557	PXL439670-1040	0.1uF 50V +80% -20%
C56	PXL439670-1030	;0.01 uF 50V +80-20%
C57	PME039550-1000	10 uF 25V 20% 5x11mm
C58	PXL456470-1520	0.0015 uF 50V 10%
C59	PXL410370-4710	470 pF 50V 5%
C6	PBE039542-1011	CHIP VER 100 uF 16V 20%
C60	PXL439670-1040	0.1uF 50V +80% -20%
C61	PME039550-1000	10 uF 25V 20% 5x11mm
C62	PXL439670-1040	0.1uF 50V +80% -20%
C63	PME039550-1000	10 uF 25V 20% 5x11mm
C64	PXL439670-1040	0.1uF 50V +80% -20%
C65	PME039550-1000	10 uF 25V 20% 5x11mm
C66	PXL456470-1520	0.0015 uF 50V 10%

# MAIN BOARD PARTS LIST

## CAPACITOR

C67	PXL410370-4710	470 pF 50V 5%
C68	PXL439670-1040	0.1uF 50V +80% -20%
C69	PBE039542-4700	CHIP VER 47 uF 16V 20%
C7	PXL439670-1040	0.1uF 50V +80% -20%
C70	PBE039542-2201	22 uF 16V 20% 85°C
C71	PME039550-1000	10 uF 25V 20% 5x11mm
C72	PXL456470-1520	0.0015 uF 50V 10%
C73	PXL410370-4710	470 pF 50V 5%
C74	PME039550-1000	10 uF 25V 20% 5x11mm
C75	PXL456470-1520	0.0015 uF 50V 10%
C76	PXL410370-4710	470 pF 50V 5%
C77	PME039550-1000	10 uF 25V 20% 5x11mm
C78	PXL456470-1520	0.0015 uF 50V 10%
C79	PXL410370-4710	470 pF 50V 5%
C8	PVE039550-1020	1000uF 25V 20% 85°C 10x17
C80	PME039540-1010	100uF16V20%SIZE=5x11mm
C81	PXL439640-3340	0.33 uF 16V +80-20%
C81	PXL439670-3340	0.33 uF 50V +80-20%
C82	PME039540-1010	100uF16V20%SIZE=5x11mm
C83	PXL439670-1040	0.1uF 50V +80% -20%
C84	PBE039542-1011	CHIP VER 100 uF 16V 20%
C85	PXL439670-1040	0.1uF 50V +80% -20%
C86	PXL439670-1040	0.1uF 50V +80% -20%
C87	PBE039542-2201	22 uF 16V 20% 85°C
C88	PME039550-1000	10 uF 25V 20% 5x11mm
C89	PXL456470-1520	0.0015 uF 50V 10%
C90	PXL410370-4710	470 pF 50V 5%
C91	PME039550-1000	10 uF 25V 20% 5x11mm
C92	PXL456470-1520	0.0015 uF 50V 10%
C93	PXL410370-4710	470 pF 50V 5%
C94	PXL439670-1040	0.1uF 50V +80% -20%
C95	PXL439670-1040	0.1uF 50V +80% -20%
C96	PXL456470-1020	0.001 uF 50V 10%
C97	PYL439630-1060	10uF 10V +80-20%
C98	PXL439670-1040	0.1uF 50V +80% -20%
C99	PXL439670-1040	0.1uF 50V +80% -20%

## INTERGRATED CIRCUIT

D1	RCZ005006-0011	CHIP ZENER 5.6V 5% 0.5W
D10	RCD114148-0010	DIODE SW 1N4148 SMT
D11	RCD114148-0010	DIODE SW 1N4148 SMT
D12	RCD114148-0010	DIODE SW 1N4148 SMT
D13	RCD114148-0010	DIODE SW 1N4148 SMT
D14	RCD114148-0010	DIODE SW 1N4148 SMT
D15	RCD155062-0010	BZV55-C6V2 SOD80C PHILIP
D16	RCD100034-0030	SR34 SMB/DO-214AA
D17	RCD114148-0010	DIODE SW 1N4148 SMT
D18	RCD114148-0010	DIODE SW 1N4148 SMT
D19	RCD155062-0010	BZV55-C6V2 SOD80C PHILIP

## INTERGRATED CIRCUIT

D20	RCZ005010-0010	10V 5% 0.5W (F5)SOD-123
D21	RCD100034-0030	SR34 SMB/DO-214AA
D22	QCL085010-0000	CHIP RES. 0 OHM JUMP WIRE
D25	RCD100004-0001	1A 100V TYPE
D4	RCZ005006-0011	5.6V 5% 0.5W
D8	RCZ005033-Z010	33V 5% 0.5W (M2)
D9	RCD114148-0010	DIODE SW 1N4148 SMT
Q10	RCN003904-0005	XISTR NPN PMBT3904 SOT23
Q10	RCN003904-0006	XISTR NPN MMBT3904-7-F
Q13	RCN003904-0005	XISTR NPN PMBT3904 SOT23
Q13	RCN003904-0006	XISTR NPN MMBT3904-7-F
Q14	RCP003906-0002	XISTR PNP 3906 SOT23
Q14	RCP003906-0003	XISTR PNP MMBT3906-7-F
Q20	RCN003904-0005	XISTR NPN PMBT3904 SOT23
Q20	RCN003904-0006	XISTR NPN MMBT3904-7-F
Q21	RCN003904-0005	XISTR NPN PMBT3904 SOT23
Q21	RCN003904-0006	XISTR NPN MMBT3904-7-F
Q22	RCN203326-0001	XISTR NPN 2SC3326-A(TE85L)
Q23	RCN003904-0005	XISTR NPN PMBT3904 SOT23
Q23	RCN003904-0006	XISTR NPN MMBT3904-7-F
Q24	RCN003904-0005	XISTR NPN PMBT3904 SOT23
Q24	RCN003904-0006	XISTR NPN MMBT3904-7-F
Q25	RCN203326-0001	XISTR NPN 2SC3326-A(TE85L)
Q26	RCN003904-0005	XISTR NPN PMBT3904 SOT23
Q26	RCN003904-0006	XISTR NPN MMBT3904-7-F
Q27	RCM002300-0001	MOSFET N-CH APM2300AACT
Q29	RCN203326-0001	XISTR NPN 2SC3326-A(TE85L)
Q30	RCP003906-0002	XISTR PNP 3906 SOT23
Q30	RCP003906-0003	XISTR PNP MMBT3906-7-F
Q31	RCN203326-0001	XISTR NPN 2SC3326-A(TE85L)
Q33	RCN203326-0001	XISTR NPN 2SC3326-A(TE85L)
Q34	RCN203326-0001	XISTR NPN 2SC3326-A(TE85L)
Q35	RCM002300-0001	MOSFET N-CH APM2300AACT
Q36	RCN003904-0005	XISTR NPN PMBT3904 SOT23
Q36	RCN003904-0006	XISTR NPN MMBT3904-7-F
Q37	RCN003904-0005	XISTR NPN PMBT3904 SOT23
Q37	RCN003904-0006	XISTR NPN MMBT3904-7-F
Q4	RCM002300-0001	MOSFET N-CH APM2300AACT
Q5	RCN003904-0005	XISTR NPN PMBT3904 SOT23
Q5	RCN003904-0006	XISTR NPN MMBT3904-7-F
Q6	RCM002300-0001	MOSFET N-CH APM2300AACT
Q7	RCN003904-0005	XISTR NPN PMBT3904 SOT23
Q7	RCN003904-0006	XISTR NPN MMBT3904-7-F
TD1	RCD100034-0030	SR34 SMB/DO-214AA
TD3	RCD100034-0030	SR34 SMB/DO-214AA
U1	RCI257600-0001	5P 5V SIMPLE SWIT REG
U1	RCI257600-0003	5P LM2576D2TR4-005 D2PAK
U10	RCI290040-0000	32P A29L040L-70 PLCC AMIC
U10	RCI290040-B000	32P EN29LV040A-70JCP

# MAIN BOARD PARTS LIST

## INTERGRATED CIRCUIT

U10	RCI390020-A001	IC32P SST39VF020-70PLCC
U12	RCI111718-0002	3 PIN NCP1117ST18T3 1.8V
U13	RCI007808-0002	3 PIN 78D08A 8V 1A TO252 U
U14	RCI111733-0002	3 PIN NCP1117ST33T3 3.3V
U15	RCI000015-0001	128P MTL015 PQFP MYSON
U16	RCI111733-0002	3 PIN NCP1117ST33T3 3.3V
U17	RCI111725-0002	3 PIN NCP1117 2.5V SOT223
U19	RCI007805-0005	3P GU7805 TO-263 GTM 5V 1A
U2	RCI001084-0002	3P AP1084KLA ADJ TO263
U20	RCI140692-0001	14PMC14069UBDR2SOONHEX
U21	RCI003541-0001	8 PIN APA3541 SOP-8
U22	RCI744052-0002	16 PIN 74HC4052D SO16
U23	RCI001729-0001	6P NCP1729SN35T1 TSOP ON
U24	RCI008954-0001	44P CS8954GV PLCC MYSON
U25	RCI111733-0002	3 PIN NCP1117ST33T3 3.3V
U26	RCI009720-0001	8P MP9720DS SOMPS 20W
U27	RCI009720-0001	8P MP9720DS SOMPS 20W
U28	RCI004558-1001	8P JRC4558M JRC OP AMP
U31	RCI001500-0001	5P KP1500-50S5 TO263-5L KT
U31	RCI002596-0001	5P LM2596S-5.0 TO-263
U5	RCI111733-0002	3 PIN NCP1117ST33T3 3.3V
U6	RCI811030-0002	3P STL8110GCL300 SOT23
U7	RCI490003-0001	144P VCT49X3RXM PMQFP

## CHIP BEAD

FB1	SCB008051-3000	300 25% AT 100MHZ IDC3000i
FB10	SCB008051-3000	300 25% AT 100MHZ IDC3000i
FB11	SCB008051-3010	300 OHM 25% 100 MHz 2A 080
FB12	SCB008051-3010	300 OHM 25% 100 MHz 2A 080
FB13	SCB008051-3000	300 25% AT 100MHZ IDC3000i
FB14	SCB008051-3000	300 25% AT 100MHZ IDC3000i
FB15	SCB008051-3010	300 OHM 25% 100 MHz 2A 080
FB16	SCB008051-3010	300 OHM 25% 100 MHz 2A 080
FB17	SCB008051-3000	300 25% AT 100MHZ IDC3000i
FB19	SCB008051-3000	300 25% AT 100MHZ IDC3000i
FB2	SCB008051-3000	300 25% AT 100MHZ IDC3000i
FB21	SCB008051-3000	300 25% AT 100MHZ IDC3000i
FB25	SCB008051-3000	300 25% AT 100MHZ IDC3000i
FB3	SCB008051-3000	300 25% AT 100MHZ IDC3000i
FB5	SCB008051-3010	300 OHM 25% 100 MHz 2A 080
FB6	SCB008051-3010	300 OHM 25% 100 MHz 2A 080
FB7	SCB008051-3000	300 25% AT 100MHZ IDC3000i
FB8	SCB008051-3000	300 25% AT 100MHZ IDC3000i
FB9	SCB008051-3000	300 25% AT 100MHZ IDC3000i
L10	SCB008051-3010	300 OHM 25% 100 MHz 2A 080
L11	SCB008051-3010	300 OHM 25% 100 MHz 2A 080
L12	SCB008051-3010	300 OHM 25% 100 MHz 2A 080
L13	SCB008051-3010	300 OHM 25% 100 MHz 2A 080
L14	SCB008051-3010	300 OHM 25% 100 MHz 2A 080

## CHIP BEAD

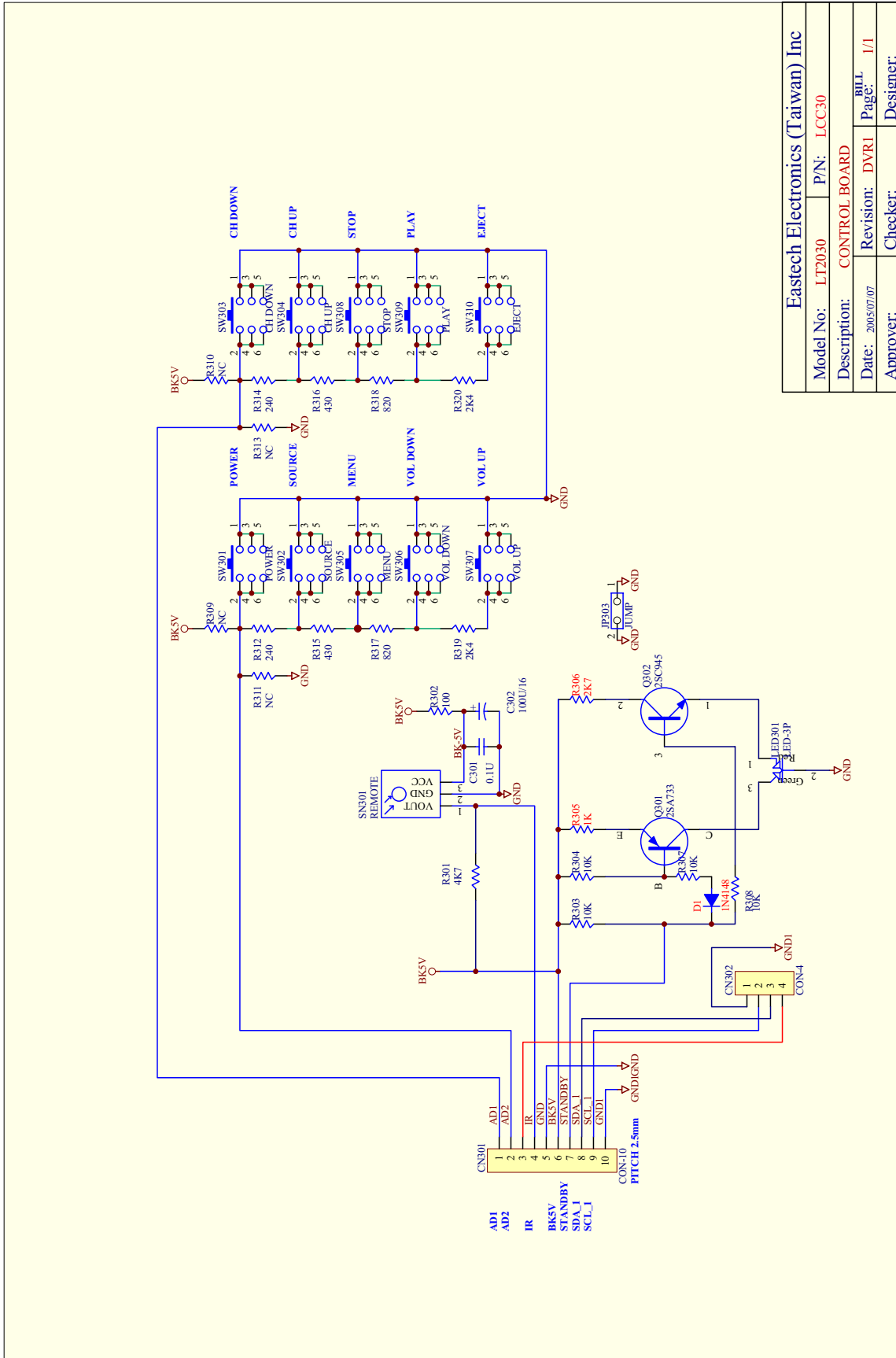
L15	SCB008051-3000	300 25% AT 100MHZ IDC3000i
L16	SCB008051-3010	300 OHM 25% 100 MHz 2A 080
L17	SCB008051-3010	300 OHM 25% 100 MHz 2A 080
L29	SCB012061-1210	120 OHM 25% 100 MHz 3A 120
L30	SCB012061-1210	120 OHM 25% 100 MHz 3A 120
L7	SCB008051-3010	300 OHM 25% 100 MHz 2A 080
L8	SCB008051-3010	300 OHM 25% 100 MHz 2A 080
L9	SCB008051-3010	300 OHM 25% 100 MHz 2A 080

## MISCELLANEOUS

FB18	SCN011714-1000	INDUCTOR 10uH 20% 4.5A
FB20	SCN011714-1000	INDUCTOR 10uH 20% 4.5A
FB22	SIL002028-0010	TOROID COIL 30uH LI-YOU
FB23	SIL002028-0010	TOROID COIL 30uH LI-YOU
F1	KCS010002-0080	CHIP FUSE 5A 125V SLOW
J1	CCN250000-0112	CONNECTOR B12B-XH-A
J11	CCN200000-0106	CONNECTOR 6 PIN P=2.0mm
J12	CCN200000-0103	CONNECTOR 3 PIN P=2.0mm
J13	CJM036013-1020	PHONE JACK D3.6 7P L15+3
J16	CJR004305-0040	RCA JACK 4P W-RED/W-RED
J17	CCN250000-0102	CONNECTOR B2B-XH-A 2 PIN
J19	CCN250000-0102	CONNECTOR B2B-XH-A 2 PIN
J2	CCN250000-0107	CONNECTOR B7B-XH-A 7 PIN
J3	CCN200000-0108	CONNECTOR 8 PIN P=2.0mm
J5	CCN200000-0109	CONNECTOR 9 PIN P=2.0mm
J7	CCN125050-0110	CONNECTOR 10P P1.25xH4.7
J9	CJR006303-0040	RCA JACK 6P G-B-R/Y-W-R
JTTL1	CHC050100-0150	CHIP FPC CON 50PIN P0.5xH2
L18	SCN023600-3A30	CHIP INDUCTORS 3.3uH 0805
L19	SCN023600-3A30	CHIP INDUCTORS 3.3uH 0805
L2	SIL002026-0010	TOROID COIL 70uH 2.3A 20%
L20	SCN023600-3A30	CHIP INDUCTORS 3.3uH 0805
L21	SCN026601-3390	INDUCTOR 3.3 UH 10%1210
L22	SCN026601-3390	INDUCTOR 3.3 UH 10%1210
L23	SCN026601-3390	INDUCTOR 3.3 UH 10%1210
L24	SCN026601-3390	INDUCTOR 3.3 UH 10%1210
L25	SCN026601-1000	CHIP INDUC10uH10% 150mA
L28	SCN026601-1000	CHIP INDUC10uH10% 150mA
L31	SIL002026-0010	TOROID COIL 70uH 2.3A 20%
P1	CJC010007-3010	RCA+DIN JK 1RCA+4P DIN 9P
U18	WTP000025-0001	TUNER LG:TAEM-G589F-F
U8	JFT007001-0010	BANDPASS FILTER 5P X6966M
U9	RCI240016-0004	8P AT24C16AN-10SU-2.7
Y1	JQC053000-2061	CRYSTAL 20.250MHZ AT-49
Y2	JCQ112000-1461	CRYSTAL 14.31818MHZ HC
Y2	JCQ313000-1461	CHIP CRYST 14.31818 MHZ
Y3	JCQ112000-1461	CRYSTAL 14.31818MHZ HC
Y3	JCQ313000-1461	CHIP CRYST 14.31818 MHZ

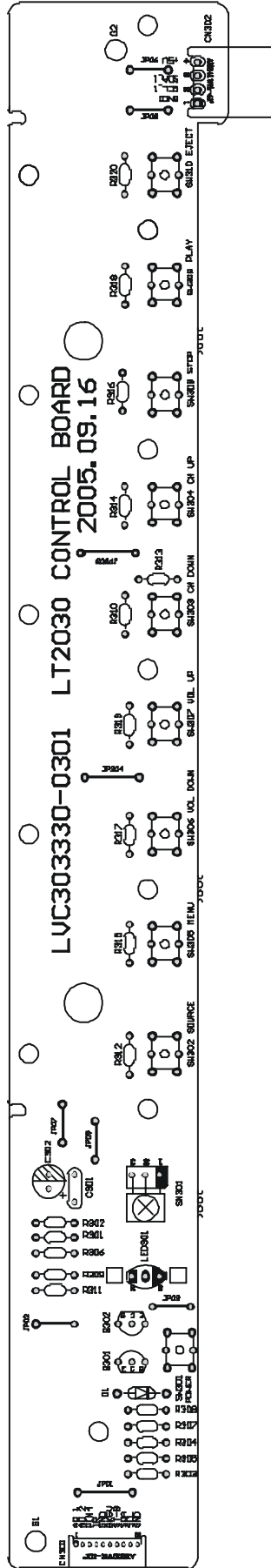


# CONTROL BOARD CIRCUIT



Eastech Electronics (Taiwan) Inc	
Model No: LT2030	P/N: LCC30
Description: CONTROL BOARD	
Date: 2005/07/07	Revision: DVRI I/1
Approver:	Checker:

# CONTROL BOARD PCB-TOP

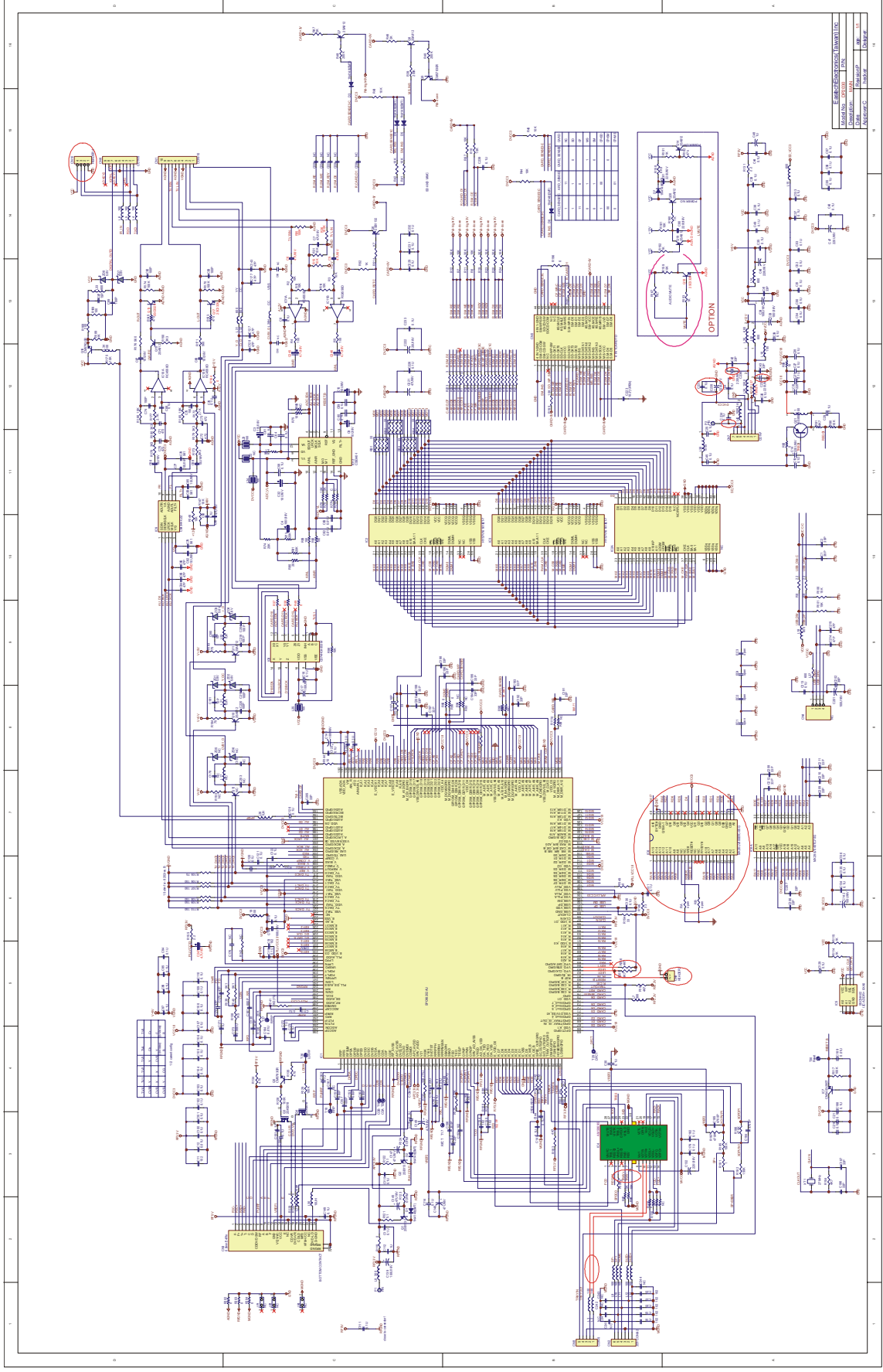


# CONTROL BOARD PARTS LIST

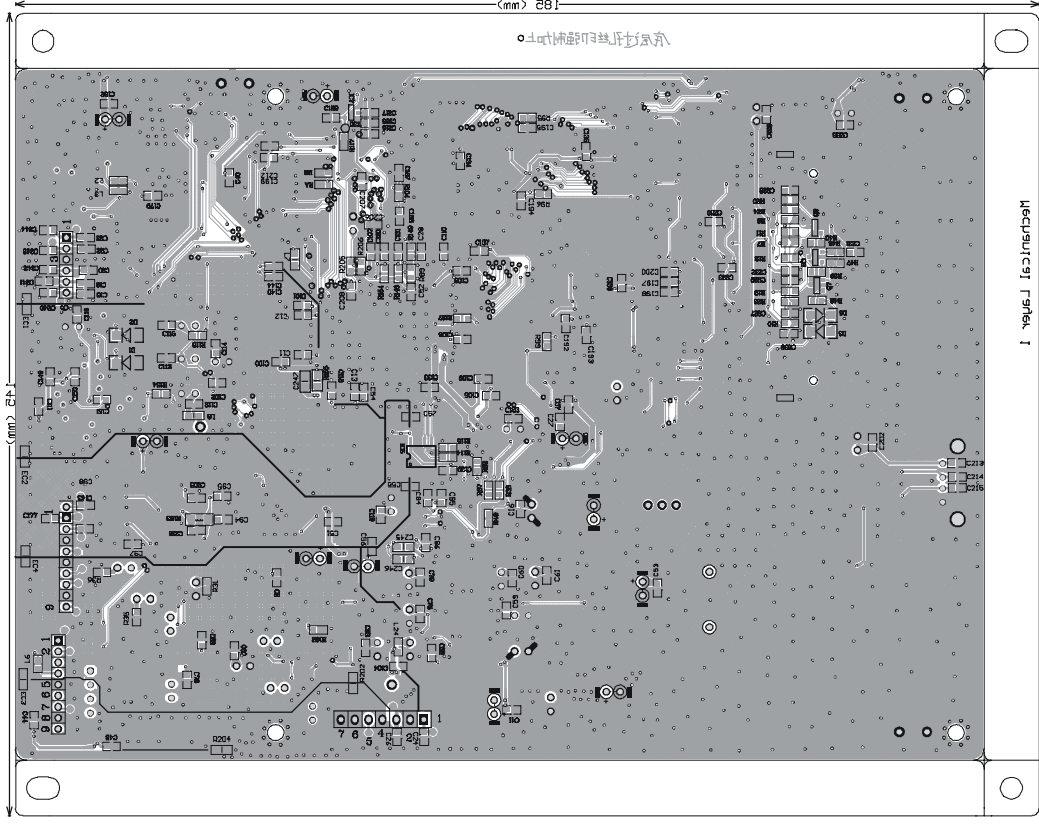
## MISCELLANEOUS

C301	PRD339670-1040	GP COND DISC 0.1 uF 50V +80-20%
C302	PME839540-1010	GP COND ELECT 100 uF 16V 20% 6.3X5m
CN301	CCN125050-0510	CONNECTOR 10P P1.25xH4.7xW3.3mm 90'
CN302	CCN254140-0704	GP CON.WAFER 4P P2.54xH6.9mm 90' GOL
D1	RAD114148-1010	GP DIODE SW 1N4148
JP01	XJP220000-0001	GP WIRE BARE 22 GA TINNED
JP02	XJP220000-0001	GP WIRE BARE 22 GA TINNED
JP03	XJP220000-0001	GP WIRE BARE 22 GA TINNED
JP05	XJP220000-0001	GP WIRE BARE 22 GA TINNED
JP06	XJP220000-0001	GP WIRE BARE 22 GA TINNED
JP07	XJP220000-0001	GP WIRE BARE 22 GA TINNED
JP08	XJP220000-0001	GP WIRE BARE 22 GA TINNED
JP303	XJP220000-0001	GP WIRE BARE 22 GA TINNED
JP304	XJP220000-0001	GP WIRE BARE 22 GA TINNED
LED301	KED260003-0010	GP LED 3F RED/BLU LENS WHITE DIFFUSE
"Q301	RAP200733-1001	GP XISTR PNP 2SA733Q,P NEC"
Q302	RAN200945-1001	GP XISTR NPN 2SC945P NEC
R301	QAF065000-4720	GP RESISTOR 4.7K OHM 1/6 W 5% CF
R302	QAF065000-1010	GP RESISTOR 100 OHM 1/6 W 5% CF
R303	QAF065000-1030	GP RESISTOR 10K OHM 1/6 W 5% CF
R304	QAF065000-1030	GP RESISTOR 10K OHM 1/6 W 5% CF
R305	QAF065000-1020	GP RESISTOR 1K OHM 1/6 W 5% CF
R306	QAF065000-2720	GP RESISTOR 2.7K OHM 1/6 W 5% CF
R307	QAF065000-1030	GP RESISTOR 10K OHM 1/6 W 5% CF
R308	QAF065000-1030	GP RESISTOR 10K OHM 1/6 W 5% CF
R312	QAF065000-2410	GP RESISTOR 240 OHM 1/6 W 5% CF
R314	QAF065000-2410	GP RESISTOR 240 OHM 1/6 W 5% CF
R315	QAF065000-4310	GP RESISTOR 430 OHM 1/6 W 5% CF
R316	QAF065000-4310	GP RESISTOR 430 OHM 1/6 W 5% CF
R317	QAF065000-8210	GP RESISTOR 820 OHM 1/6 W 5% CF
R318	QAF065000-8210	GP RESISTOR 820 OHM 1/6 W 5% CF
R319	QAF065000-2420	GP RESISTOR 2.4K OHM 1/6 W 5% CF
R320	QAF065000-2420	GP RESISTOR 2.4K OHM 1/6 W 5% CF
SN301	RHO263804-2102	GP IRT RECEIVER IRM-2638AF4
SW301	MAW060001-0010	GP AI TACT SW SKHVBE3520 ALPS
SW302	MAW060001-0010	GP AI TACT SW SKHVBE3520 ALPS
SW303	MAW060001-0010	GP AI TACT SW SKHVBE3520 ALPS
SW304	MAW060001-0010	GP AI TACT SW SKHVBE3520 ALPS
SW305	MAW060001-0010	GP AI TACT SW SKHVBE3520 ALPS
SW306	MAW060001-0010	GP AI TACT SW SKHVBE3520 ALPS
SW307	MAW060001-0010	GP AI TACT SW SKHVBE3520 ALPS
SW308	MAW060001-0010	GP AI TACT SW SKHVBE3520 ALPS
SW309	MAW060001-0010	GP AI TACT SW SKHVBE3520 ALPS
SW310	MAW060001-0010	GP AI TACT SW SKHVBE3520 ALPS

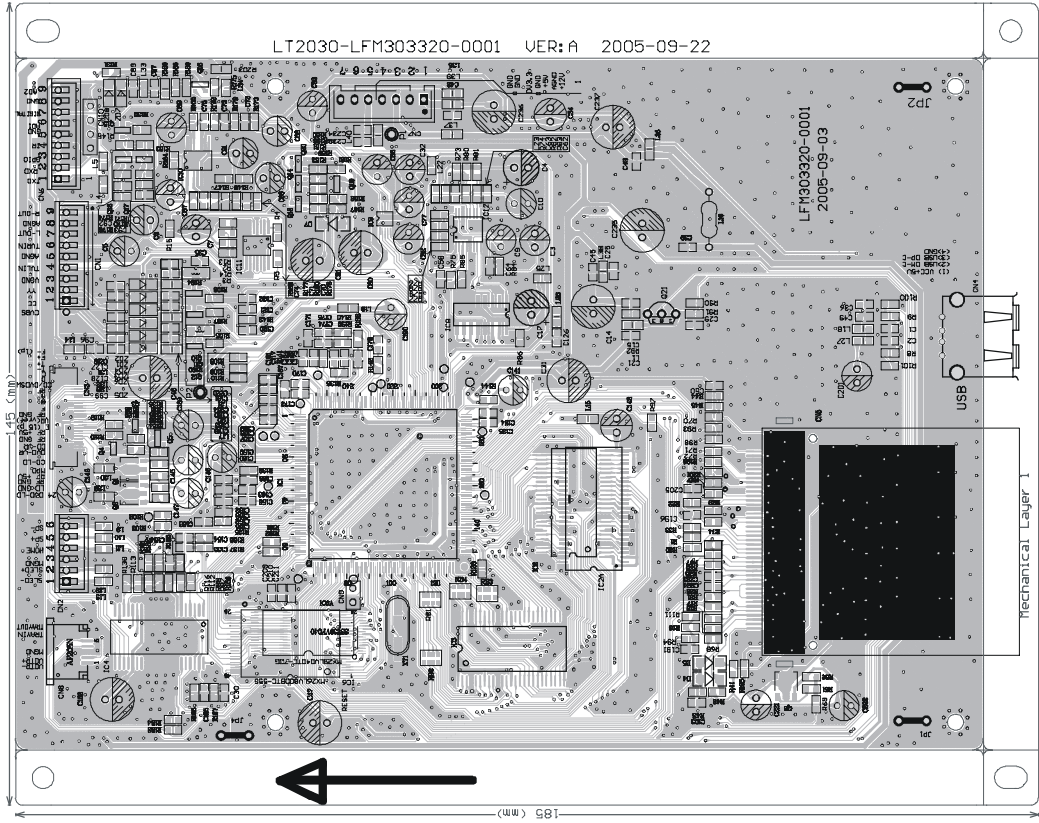
# DVD BOARD CIRCUIT



**DVD BOARD PCB-BOTTOM**



**DVD BOARD PCB-TOP**



# DVD BOARD PARTS LIST

RESISTOR		
R100	QCF015030-1530	15K OHM 1/10W 5% 0603
R101	QCF015030-1530	15K OHM 1/10W 5% 0603
R103	QCF015030-4720	4.7K OHM 1/10W 5% 0603
R104	QCF015030-4720	4.7K OHM 1/10W 5% 0603
R105	QCF015030-7500	75 OHM 1/10W 5% 0603
R106	QCF015030-1510	150 OHM 1/10W 5% 0603
R107	QCF015030-1510	150 OHM 1/10W 5% 0603
R108	QCF015030-1510	150 OHM 1/10W 5% 0603
R109	QCF015030-1510	150 OHM 1/10W 5% 0603
R110	QCF015030-1510	150 OHM 1/10W 5% 0603
R114	QCF015030-1020	1K OHM 1/10W 5% 0603
R115	QCF015030-1020	1K OHM 1/10W 5% 0603
R116	QCF015030-0000	0 OHM 1/10W 5% 0603
R117	QCF015030-1040	100K OHM 1/10W 5% 0603
R118	QCF015030-0000	0 OHM 1/10W 5% 0603
R119	QCF015030-0000	0 OHM 1/10W 5% 0603
R120	QCF015030-0000	0 OHM 1/10W 5% 0603
R121	QCF015030-5190	5.1 OHM 1/10W 5% 0603
R122	QCF015030-5190	5.1 OHM 1/10W 5% 0603
R123	QCF015030-0000	0 OHM 1/10W 5% 0603
R124	QCF015030-0000	0 OHM 1/10W 5% 0603
R125	QCF015030-4740	470K OHM 1/10W 5% 0603
R126	SCB006039-6001	CHIP BEAD 60 OHM 100MHz
R127	QCF015030-4720	4.7K OHM 1/10W 5% 0603
R128	QCF015030-1040	100K OHM 1/10W 5% 0603
R129	QCF015030-1040	100K OHM 1/10W 5% 0603
R130	QCF015030-0000	0 OHM 1/10W 5% 0603
R131	QCF015030-1090	1 OHM 1/10W 5% 0603
R132	QCF011030-3302	33K OHM 1/10W 1% 0603
R134	QCF015030-4710	470 OHM 1/10W 5% 0603
R135	QCF015030-4710	470 OHM 1/10W 5% 0603
R136	QCF015030-2030	20K OHM 1/10W 5% 0603
R137	QCF015030-3330	33K OHM 1/10W 5% 0603
R138	QCF015030-1520	1.5K OHM 1/10W 5% 0603
R139	QCF015030-5120	5.1K OHM 1/10W 5% 0603
R140	QCF015030-5120	5.1K OHM 1/10W 5% 0603
R141	QCF011030-1201	1.2K OHM 1/10W 1% 0603
R143	QCF015030-6810	680 OHM 1/10W 5% 0603
R144	QCF015030-1000	10 OHM 1/10W 5% 0603
R145	QCF015030-4710	470 OHM 1/10W 5% 0603
R146	QCF015030-3300	33 OHM 1/10W 5% 0603
R147	QCF015030-1030	10K OHM 1/10W 5% 0603
R148	QCF015030-1030	10K OHM 1/10W 5% 0603
R149	QCF015030-0000	0 OHM 1/10W 5% 0603
R150	QCF015030-3320	3.3K OHM 1/10W 5% 0603
R151	QCF015030-1020	1K OHM 1/10W 5% 0603
R152	QCF015030-1020	1K OHM 1/10W 5% 0603
R153	QCF015030-1020	1K OHM 1/10W 5% 0603
R154	QCF015030-3300	33 OHM 1/10W 5% 0603

RESISTOR		
R155	QCF085020-2290	2.2 OHM 1/8W 5% 0805
R156	QCF015030-0000	0 OHM 1/10W 5% 0603
R158	QCF015030-6820	6.8K OHM 1/10W 5% 0603
R159	QCF015030-1030	10K OHM 1/10W 5% 0603
R160	QCF015030-1020	1K OHM 1/10W 5% 0603
R161	QCF015030-1030	10K OHM 1/10W 5% 0603
R162	QCF015030-4730	47K OHM 1/10W 5% 0603
R163	QCF015030-4710	470 OHM 1/10W 5% 0603
R164	QCF015030-0000	0 OHM 1/10W 5% 0603
R165	QCF015030-1830	18K OHM 1/10W 5% 0603
R166	QCF015030-1830	18K OHM 1/10W 5% 0603
R168	QCF015030-2010	200 OHM 1/10W 5% 0603
R169	QCF085020-1010	100 OHM 1/8W 5% 0805
R170	QCF015030-1040	100K OHM 1/10W 5% 0603
R171	QCF015030-5610	560 OHM 1/10W 5% 0603
R172	QCF015030-2720	2.7K OHM 1/10W 5% 0603
R173	QCF015030-3320	3.3K OHM 1/10W 5% 0603
R174	QCF015030-1040	100K OHM 1/10W 5% 0603
R175	QCF015030-1030	10K OHM 1/10W 5% 0603
R176	QCF015030-5610	560 OHM 1/10W 5% 0603
R177	QCF015030-2720	2.7K OHM 1/10W 5% 0603
R178	QCF015030-3320	3.3K OHM 1/10W 5% 0603
R179	QCF015030-3320	3.3K OHM 1/10W 5% 0603
R180	QCF015030-3320	3.3K OHM 1/10W 5% 0603
R181	QCF015030-1090	1 OHM 1/10W 5% 0603
R182	QCF015030-1540	150K OHM 1/10W 5% 0603
R183	QCF015030-4720	4.7K OHM 1/10W 5% 0603
R184	QCF015030-4720	4.7K OHM 1/10W 5% 0603
R185	QCF015030-1540	150K OHM 1/10W 5% 0603
R186	QCF015030-4740	470K OHM 1/10W 5% 0603
R187	QCF015030-4740	470K OHM 1/10W 5% 0603
R188	QCF015030-6830	68K OHM 1/10W 5% 0603
R189	QCF015030-1020	1K OHM 1/10W 5% 0603
R191	QCF015030-2220	2.2K OHM 1/10W 5% 0603
R192	QCF015030-2220	2.2K OHM 1/10W 5% 0603
R193	QCF045010-7500	75 OHM 1/4W 5% 1206
R194	QCF045010-7500	75 OHM 1/4W 5% 1206
R202	QCF015030-0000	0 OHM 1/10W 5% 0603
R203	QCF015030-0000	0 OHM 1/10W 5% 0603
R204	QCF015030-0000	0 OHM 1/10W 5% 0603
R205	QCF015030-4720	4.7K OHM 1/10W 5% 0603
R206	QCF015030-4720	4.7K OHM 1/10W 5% 0603
R37	QCF015030-0000	0 OHM 1/10W 5% 0603
R38	QCF015030-0000	0 OHM 1/10W 5% 0603
R49	QCF015030-0000	0 OHM 1/10W 5% 0603
R75	QCF015030-1530	15K OHM 1/10W 5% 0603
R86	QCF015030-1030	10K OHM 1/10W 5% 0603
R87	QCF015030-1030	10K OHM 1/10W 5% 0603
R88	QCF015030-1030	10K OHM 1/10W 5% 0603

# DVD BOARD PARTS LIST

## RESISTOR

R89	QCF015030-0000	0 OHM 1/10W 5% 0603
R90	QCF015030-1030	10K OHM 1/10W 5% 0603
R91	QCF015030-4720	4.7K OHM 1/10W 5% 0603
R92	QCF015030-0000	0 OHM 1/10W 5% 0603
R95	QCF015030-0000	0 OHM 1/10W 5% 0603
R96	QCF015030-0000	0 OHM 1/10W 5% 0603
RB1	QCA165340-3300	RES.ARRAY 33 OHM 1/16W 5%
RB2	QCA165340-3300	RES.ARRAY 33 OHM 1/16W 5%
RB3	QCA165340-3300	RES.ARRAY 33 OHM 1/16W 5%
RB4	QCA165340-3300	RES.ARRAY 33 OHM 1/16W 5%

## CAPACITOR

C1	PXL410370-3900	CHIP CAP 39 pF 50V 5%
C100	PXL456470-1040	CHIP CAP 0.1 uF 50V 10%
C101	PXL456470-1040	CHIP CAP 0.1 uF 50V 10%
C102	PXL456470-1040	CHIP CAP 0.1 uF 50V 10%
C103	PXL456470-1040	CHIP CAP 0.1 uF 50V 10%
C104	PXL456470-1040	CHIP CAP 0.1 uF 50V 10%
C105	PXL456470-1040	CHIP CAP 0.1 uF 50V 10%
C106	PXL456470-1040	CHIP CAP 0.1 uF 50V 10%
C107	PXL456470-1040	CHIP CAP 0.1 uF 50V 10%
C108	PXL456470-1040	CHIP CAP 0.1 uF 50V 10%
C109	PXL456470-1040	CHIP CAP 0.1 uF 50V 10%
C11	PXL456470-1020	CHIP CAP 0.001 uF 50V 10%
C110	PXL456470-1040	CHIP CAP 0.1 uF 50V 10%
C111	PXL456470-1040	CHIP CAP 0.1 uF 50V 10%
C112	PXL456470-1040	CHIP CAP 0.1 uF 50V 10%
C113	PXL456470-1040	CHIP CAP 0.1 uF 50V 10%
C114	PXL456470-1040	CHIP CAP 0.1 uF 50V 10%
C115	PXL456470-1040	CHIP CAP 0.1 uF 50V 10%
C116	PXL456470-1040	CHIP CAP 0.1 uF 50V 10%
C117	PXL456470-1040	CHIP CAP 0.1 uF 50V 10%
C118	PXL456470-1040	CHIP CAP 0.1 uF 50V 10%
C119	PXL456470-1040	CHIP CAP 0.1 uF 50V 10%
C12	PXL456470-1030	CHIP CAP 0.01uF 50V10%
C120	PXL456470-1040	CHIP CAP 0.1 uF 50V 10%
C121	PXL456470-1040	CHIP CAP 0.1 uF 50V 10%
C122	PXL439570-2240	CHIP CAP 0.22uF 50V 20%
C123	PXL456470-1040	CHIP CAP 0.1 uF 50V 10%
C124	PXL456470-1040	CHIP CAP 0.1 uF 50V 10%
C125	PXL456470-1040	CHIP CAP 0.1 uF 50V 10%
C126	PXL456470-1040	CHIP CAP 0.1 uF 50V 10%
C127	PXL410370-4700	CHIP CAP 47 pF 50V 5%
C128	PXL410370-4700	CHIP CAP 47 pF 50V 5%
C129	PXL456470-1040	CHIP CAP 0.1 uF 50V 10%
C13	PXL456470-1020	CHIP CAP 0.001 uF 50V 10%
C130	PXL456470-1040	CHIP CAP 0.1 uF 50V 10%
C131	PXL456470-1040	CHIP CAP 0.1 uF 50V 10%
C132	PME839540-2210	220 uF 16V 20% 8X5mm

## CAPACITOR

C133	PXL456470-1040	CHIP CAP 0.1 uF 50V 10%
C134	PXL456470-1040	CHIP CAP 0.1 uF 50V 10%
C135	PXL456470-1040	CHIP CAP 0.1 uF 50V 10%
C136	PXL456470-1040	CHIP CAP 0.1 uF 50V 10%
C137	PXL410370-1000	CHIP CAP 10 pF 50V 5%
C138	PXL456470-1010	CHIP CAP 100pF 50V 10%
C139	PME839540-1010	100 uF 16V 20% 6.3X5mm
C14	PME839540-2210	220 uF 16V 20% 8X5mm
C140	PXL456470-1040	CHIP CAP 0.1 uF 50V 10%
C141	PME839540-1010	100 uF 16V 20% 6.3X5mm
C142	PME839540-1010	100 uF 16V 20% 6.3X5mm
C143	PXL410370-4700	CHIP CAP 47 pF 50V 5%
C144	PXL456470-1040	CHIP CAP 0.1 uF 50V 10%
C145	PME839540-4700	47uF 16V 20% 5X5mm
C146	PME839540-4700	47uF 16V 20% 5X5mm
C147	PME839540-4700	47uF 16V 20% 5X5mm
C148	PME839540-4700	47uF 16V 20% 5X5mm
C149	PXL456470-1040	CHIP CAP 0.1 uF 50V 10%
C15	PXL456470-1040	CHIP CAP 0.1 uF 50V 10%
C150	PXL456470-1040	CHIP CAP 0.1 uF 50V 10%
C151	PXL456470-1040	CHIP CAP 0.1 uF 50V 10%
C152	PXL456470-8210	CHIP CAP;820pF 50V 10%
C153	PXL456470-1020	CHIP CAP 0.001 uF 50V 10%
C154	PXL456470-1020	CHIP CAP 0.001 uF 50V 10%
C155	PXL456470-1020	CHIP CAP 0.001 uF 50V 10%
C156	PXL456470-3010	CHIP CAP 300PF 50V +-10%
C157	PXL456470-6810	CHIP CAP 680 pF 50V 10%
C158	PXL456470-6810	CHIP CAP 680 pF 50V 10%
C159	PXL456470-6810	CHIP CAP 680 pF 50V 10%
C16	PXL456470-1040	CHIP CAP 0.1 uF 50V 10%
C160	PXL456470-6810	CHIP CAP 680 pF 50V 10%
C161	PXL456470-6810	CHIP CAP 680 pF 50V 10%
C162	PXL456470-1030	CHIP CAP 0.01uF 50V10%
C163	PXL456470-1030	CHIP CAP 0.01uF 50V10%
C164	PXL456470-1030	CHIP CAP 0.01uF 50V10%
C165	PXL456470-3310	CHIP CAP 330pF 50V 10%
C166	PXL439570-2240	CHIP CAP 0.22uF 50V 20%
C168	PXL456470-4730	CHIP CAP 0.047 uF 50V 10%
C169	PXL439570-1050	CHIP CAP 1uF 50V 20%
C17	PME839540-1010	100 uF 16V 20% 6.3X5mm
C170	PXL439570-1050	CHIP CAP 1uF 50V 20%
C171	PXL439570-1050	CHIP CAP 1uF 50V 20%
C172	PXL439570-1050	CHIP CAP 1uF 50V 20%
C173	PXL456470-6830	CHIP CAP 0.068uF 50V 10%
C174	PXL410370-4700	CHIP CAP 47 pF 50V 5%
C175	PXL410370-4700	CHIP CAP 47 pF 50V 5%
C177	PXL410370-4700	CHIP CAP 47 pF 50V 5%
C179	PXL456470-1040	CHIP CAP 0.1 uF 50V 10%
C18	PXL456470-1020	CHIP CAP 0.001 uF 50V 10%

# DVD BOARD PARTS LIST

CAPACITOR				CAPACITOR			
C180	PXL410370-1000	CHIP CAP	10 pF 50V 5%	C233	PXL456470-1040	CHIP CAP	0.1 uF 50V 10%
C181	PXL410370-1000	CHIP CAP	10 pF 50V 5%	C234	PXL456470-1040	CHIP CAP	0.1 uF 50V 10%
C182	PXL456470-1040	CHIP CAP	0.1 uF 50V 10%	C235	PME839540-2210	220 uF 16V 20% 8X5mm	
C184	PXL456470-4720	CHIP CAP	0.0047uF 50V 10%	C236	PME839540-2210	220 uF 16V 20% 8X5mm	
C185	PXL456470-4720	CHIP CAP	0.0047uF 50V 10%	C237	PME839540-2210	220 uF 16V 20% 8X5mm	
C186	PXL410370-3300	CHIP CAP	33 pF 50V 5%	C238	PXL456470-1040	CHIP CAP	0.1 uF 50V 10%
C187	PXL410370-3300	CHIP CAP	33 pF 50V 5%	C239	PXL456470-1040	CHIP CAP	0.1 uF 50V 10%
C188	PXL456470-1040	CHIP CAP	0.1 uF 50V 10%	C24	PXL456470-1040	CHIP CAP	0.1 uF 50V 10%
C189	PXL456470-1030	CHIP CAP	0.01uF 50V10%	C247	PYL439640-4750	CHIP CAP	4.7 uF 16V+80%-20%
C19	PXL456470-1020	CHIP CAP	0.001 uF 50V 10%	C25	PXL456470-1040	CHIP CAP	0.1 uF 50V 10%
C190	PME839540-1010	100 uF 16V 20% 6.3X5mm		C26	PXL456470-1040	CHIP CAP	0.1 uF 50V 10%
C191	PXL410370-3300	CHIP CAP	33 pF 50V 5%	C27	PXL456470-1040	CHIP CAP	0.1 uF 50V 10%
C192	PXL410370-3300	CHIP CAP	33 pF 50V 5%	C28	PXL456470-1040	CHIP CAP	0.1 uF 50V 10%
C193	PXL410370-3300	CHIP CAP	33 pF 50V 5%	C29	PXL456470-1040	CHIP CAP	0.1 uF 50V 10%
C194	PXL410370-3300	CHIP CAP	33 pF 50V 5%	C30	PXL456470-1040	CHIP CAP	0.1 uF 50V 10%
C195	PXL410370-3300	CHIP CAP	33 pF 50V 5%	C31	PME839540-2210	220 uF 16V 20% 8X5mm	
C196	PXL410370-3300	CHIP CAP	33 pF 50V 5%	C33	PME839540-1010	100 uF 16V 20% 6.3X5mm	
C197	PXL410370-3300	CHIP CAP	33 pF 50V 5%	C34	PME839540-1010	100 uF 16V 20% 6.3X5mm	
C198	PXL410370-3300	CHIP CAP	33 pF 50V 5%	C35	PXL456470-1040	CHIP CAP	0.1 uF 50V 10%
C199	PXL410370-3300	CHIP CAP	33 pF 50V 5%	C36	PXL456470-1040	CHIP CAP	0.1 uF 50V 10%
C2	PXL410370-3900	CHIP CAP	39 pF 50V 5%	C37	PXL456470-1040	CHIP CAP	0.1 uF 50V 10%
C20	PXL456470-1020	CHIP CAP	0.001 uF 50V 10%	C38	PXL456470-1040	CHIP CAP	0.1 uF 50V 10%
C200	PXL410370-3300	CHIP CAP	33 pF 50V 5%	C39	PXL456470-1040	CHIP CAP	0.1 uF 50V 10%
C202	PXL410370-3900	CHIP CAP	39 pF 50V 5%	C40	PXL456470-1040	CHIP CAP	0.1 uF 50V 10%
C204	PXL456470-1010	CHIP CAP	100pF 50V 10%	C41	PXL410370-3300	CHIP CAP	33 pF 50V 5%
C205	PXL410370-3300	CHIP CAP	33 pF 50V 5%	C42	PXL410370-3300	CHIP CAP	33 pF 50V 5%
C206	PXL410370-3300	CHIP CAP	33 pF 50V 5%	C43	PXL410370-3300	CHIP CAP	33 pF 50V 5%
C207	PXL410370-3300	CHIP CAP	33 pF 50V 5%	C44	PXL456470-1040	CHIP CAP	0.1 uF 50V 10%
C208	PXL410370-3300	CHIP CAP	33 pF 50V 5%	C45	PXL456470-1040	CHIP CAP	0.1 uF 50V 10%
C209	PXL410370-3300	CHIP CAP	33 pF 50V 5%	C46	PME839540-2210	220 uF 16V 20% 8X5mm	
C21	PXL456470-1040	CHIP CAP	0.1 uF 50V 10%	C47	PME839540-2210	220 uF 16V 20% 8X5mm	
C210	PXL410370-3300	CHIP CAP	33 pF 50V 5%	C48	PXL439570-1050	CHIP CAP	1uF 50V 20%
C211	PXL410370-3300	CHIP CAP	33 pF 50V 5%	C49	PXL456470-1040	CHIP CAP	0.1 uF 50V 10%
C212	PXL410370-3300	CHIP CAP	33 pF 50V 5%	C50	PXL456470-1040	CHIP CAP	0.1 uF 50V 10%
C213	PXL456470-1040	CHIP CAP	0.1 uF 50V 10%	C51	PXL456470-1040	CHIP CAP	0.1 uF 50V 10%
C214	PXL410370-4700	CHIP CAP	47 pF 50V 5%	C52	PXL456470-1040	CHIP CAP	0.1 uF 50V 10%
C215	PXL410370-4700	CHIP CAP	47 pF 50V 5%	C53	PXL456470-1040	CHIP CAP	0.1 uF 50V 10%
C216	PXL456470-1040	CHIP CAP	0.1 uF 50V 10%	C54	PXL456470-1040	CHIP CAP	0.1 uF 50V 10%
C217	PXL456470-1040	CHIP CAP	0.1 uF 50V 10%	C55	PXL456470-1040	CHIP CAP	0.1 uF 50V 10%
C218	PXL456470-1010	CHIP CAP	100pF 50V 10%	C56	PXL456470-1040	CHIP CAP	0.1 uF 50V 10%
C219	PXL456470-1010	CHIP CAP	100pF 50V 10%	C57	PXL456470-1040	CHIP CAP	0.1 uF 50V 10%
C22	PXL456470-1020	CHIP CAP	0.001 uF 50V 10%	C65	PME839540-1000	COND ELECT;10 uF 16V 20%	
C220	PXL456470-1010	CHIP CAP	100pF 50V 10%	C66	PME839540-1000	COND ELECT;10 uF 16V 20%	
C222	PME839540-2210	220 uF 16V 20% 8X5mm		C67	PME839540-1000	COND ELECT;10 uF 16V 20%	
C226	PXL456470-1040	CHIP CAP	0.1 uF 50V 10%	C68	PME839540-1000	COND ELECT;10 uF 16V 20%	
C229	PXL456470-1040	CHIP CAP	0.1 uF 50V 10%	C69	PME839540-1000	COND ELECT;10 uF 16V 20%	
C23	PXL456470-1020	CHIP CAP	0.001 uF 50V 10%	C7	PME839540-4700	47uF 16V 20% 5X5mm	
C231	PXL456470-1040	CHIP CAP	0.1 uF 50V 10%	C70	PXL456470-4720	CHIP CAP	0.0047uF 50V 10%
C232	PXL456470-1040	CHIP CAP	0.1 uF 50V 10%	C71	PXL456470-4720	CHIP CAP	0.0047uF 50V 10%



# DVD BOARD PARTS LIST

## CAPACITOR

C72	PXL456470-4720	CHIP CAP 0.0047uF 50V10%
C73	PXL456470-4720	CHIP CAP 0.0047uF 50V10%
C74	PXL456470-1510	CHIP CAP 150pF 50V 10%
C75	PXL456470-1510	CHIP CAP 150pF 50V 10%
C76	PXL456470-1040	CHIP CAP 0.1 uF 50V 10%
C77	PME839540-1000	COND ELECT;10 uF16V 20%
C78	PXL456470-5610	CHIP CAP 560pF50V 10%
C79	PXL456470-5610	CHIP CAP 560pF50V 10%
C80	PME839540-2210	220 uF 16V 20% 8X5mm
C81	PME839540-2210	220 uF 16V 20% 8X5mm
C82	PME839540-1000	COND ELECT;10 uF16V 20%
C83	PXL456470-5610	CHIP CAP 560pF50V 10%
C84	PXL410370-4700	CHIP CAP47 pF 50V 5%
C85	PXL410370-4700	CHIP CAP47 pF 50V 5%
C86	PXL410370-4700	CHIP CAP47 pF 50V 5%
C87	PXL410370-1500	CHIP CAP 15 pF 50V 5%
C88	PXL456470-1040	CHIP CAP 0.1 uF 50V 10%
C89	PXL456470-1010	CHIP CAP 100pF 50V 10%
C90	PXL456470-1040	CHIP CAP 0.1 uF 50V 10%
C91	PME839540-4700	47uF 16V 20% 5X5mm
C92	PXL456470-1010	CHIP CAP 100pF 50V 10%
C93	PXL456470-1010	CHIP CAP 100pF 50V 10%
C94	PXL456470-1040	CHIP CAP 0.1 uF 50V 10%
C95	PXL456470-1040	CHIP CAP 0.1 uF 50V 10%
C96	PXL456470-1040	CHIP CAP 0.1 uF 50V 10%
C97	PXL456470-1040	CHIP CAP 0.1 uF 50V 10%

## CHIP BEAD

L1	SCB008050-6010	600 OHM AT 100MHz
L10	SCB006030-1010	100 OHM AT 100MHZ SMD
L11	SCB006030-1010	100 OHM AT 100MHZ SMD
L12	SCB006030-1010	100 OHM AT 100MHZ SMD
L13	SCB006030-1010	100 OHM AT 100MHZ SMD
L14	SCB008050-6010	600 OHM AT 100MHz
L15	SCB008050-6010	600 OHM AT 100MHz
L16	SFB001001-0030	BEAD FERIT DIA3.5x6mm
L19	SCB008050-6010	600 OHM AT 100MHz
L2	SCB006030-1010	100 OHM AT 100MHZ SMD
L20	SCN023501-1090	CHOKE 1uH 5%
L21	SCN023501-1090	CHOKE 1uH 5%
L23	SCB006030-1010	100 OHM AT 100MHZ SMD
L24	SCB006030-1010	100 OHM AT 100MHZ SMD
L26	SCN023501-1090	CHOKE 1uH 5%
L29	SCN023600-1000	CHIP INDUC 10 uH 10% SMD
L3	SCB006030-1010	100 OHM AT 100MHZ SMD
L30	SCN023600-1000	CHIP INDUC 10 uH 10% SMD
L31	SCB006030-6010	FERRITE 600 OHM
L32	SCB006030-6010	FERRITE 600 OHM
L33	SCB006030-6010	FERRITE 600 OHM

## CHIP BEAD

L34	SCB006030-6010	FERRITE 600 OHM
L35	SCB008050-6010	600 OHM AT 100MHz
L36	SCB008050-6010	600 OHM AT 100MHz
L37	SCB006031-1011	100 OHM 25% 100MHz 2A 060
L38	SCB008050-1020	1K OHM 25% O8O5
L39	SCB008050-1020	1K OHM 25% O8O5
L4	SCB006030-1010	100 OHM AT 100MHZ SMD
L40	SCB108051-1010	100[ $\pm$ 25% 100MHZ 3A 080
L5	SCB006030-1010	100 OHM AT 100MHZ SMD
L6	SCB006030-1010	100 OHM AT 100MHZ SMD
L7	SCB008050-3010	300 OHM 25% AT 100MHZ
L8	SCB008050-3010	300 OHM 25% AT 100MHZ
L9	SCB006030-1010	100 OHM AT 100MHZ SMD

## INTERGRATED CIRCUIT

D1	RCD114148-1011	DIODE CHIP BAV16W/IN4148V
D2	RCD114148-1011	DIODE CHIP BAV16W/IN4148V
D7	RCD114148-1011	DIODE CHIP BAV16W/IN4148V
IC1	RCI008202-0001	IC 256 PIN SPHE8202A-U
IC10	RCI004558-1102	IC 8P CO4558A SO8
IC2	RCI636165-0002	IC 50P EM636165TS-7G TSOP
IC3	RCI636165-0002	IC 50P EM636165TS-7G TSOP
IC4	RCI005869-0001	IC 28P AM5869S HSOP AMTEI
IC4	RCI005888-0002	IC 28P V5888S HSOP VAITECI
IC5	RCI240002-1005	IC8 PIN 24LLC02A SOP
IC6	RCI260800-0001	IC 48 PIN MX26LV800BTC
IC6	RCI260800-1001	IC 48 PIN MX26LV800BTC
IC7	RCI000809-0008	IC 3P AZ809NSTR-E1 SOT23
IC9	RCI004344-0001	IC 10 PIN CS4344-CZZ TSSOP
Q1	RCP201132-1003	XISTR PNP 2SB1132RT100
Q10	RCP200733-1001	XISTR PNP 2SA812 HFE
Q11	RCP200733-1001	XISTR PNP 2SA812 HFE
Q13	RCN203326-0001	XISTR NPN 2SC3326-A(TE85L
Q13	RCN203326-1001	XISTR NPN 2SC3326-A(TE85L
Q14	RCP200733-1001	XISTR PNP 2SA812 HFE
Q15	RCP200733-1001	XISTR PNP 2SA812 HFE
Q16	RCN003875-1101	XISTR NPNKTC3875-Y SOT23
Q17	RCN203326-0001	XISTR NPN 2SC3326-A(TE85L
Q17	RCN203326-1001	XISTR NPN 2SC3326-A(TE85L
Q18	RCN203326-0001	XISTR NPN 2SC3326-A(TE85L
Q18	RCN203326-1001	XISTR NPN 2SC3326-A(TE85L
Q19	RCP200733-1001	XISTR PNP 2SA812 HFE
Q2	RCP201132-1003	XISTR PNP 2SB1132RT100
Q20	RCP200733-1001	XISTR PNP 2SA812 HFE
Q21	RAP008550-0003	XISTR PNP 8550(3CA8550)
Q3	RCM203018-1002	MOSFET 2SK3018 30V/0.1A
Q3	RCM203018-1101	FET 2SK3018 30V/0.1A SC-70
Q4	RCM203018-1002	MOSFET 2SK3018 30V/0.1A
Q4	RCM203018-1101	FET 2SK3018 30V/0.1A SC-70

# **DVD BOARD PARTS LIST**

## **INTERGRATED CIRCUIT**

ZD1	RCZ005006-Z011	CHIP ZENER 5.6V5% 0.5W(E2
ZD2	RCZ005006-Z011	CHIP ZENER 5.6V5% 0.5W(E2
ZD3	RCZ005006-Z011	CHIP ZENER 5.6V5% 0.5W(E2
ZD4	RCZ005006-Z011	CHIP ZENER 5.6V5% 0.5W(E2
ZD7	RCZ005006-Z011	CHIP ZENER 5.6V5% 0.5W(E2
ZD8	RCZ005006-Z011	CHIP ZENER 5.6V5% 0.5W(E2

## **MISCELLANEOUS**

CN1	VWA220005-0001	C/W 9/3+6P 280/220mm
CN2	VWA200022-0008	C/W 6P 230mm 1007#26
CN3	CHC050020-0124	CHIP CONNECTOR 24P P=.5
CN6	VWA220004-0001	C/W 7P/9P 220mm 254
CN7	VWA030001-0001	C/W 7P 300mm 1007#22
CN8	CHC100080-0105	CHIP FPC CONN.5P
Q5	RCN003875-1101	XISTR NPNKTC3875-Y SOT23
XT1	JCQ112000-2760	CRYST 27MHZ HC-49US +/-20

# REPLACEMENT PARTS LIST

Part NO.	Description	Installation Point	Grade	QTY
PBE039540-4700	GP CHIP ELECT 47 uF 16V 20%	C69	Main	1
PBE039542-4700	CHIP VER 47 uF 16V 20%	C69	Replacement	0
RCI390020-A001	GP IC32P SST39VF020-70PLCC SSTFLASH EEPR	U10	Replacement	0
RCI290040-B000	GP IC 32P EN29LV040A-70JCP PLCC EON	U10	Main	1
RCI290040-0000	IC 32P A29L040L-70 PLCC AMIC	U10	Replacement	0
JCQ112000-1461	GP CRYSTAL 14.31818MHZ HC-49US +/-20PPM	Y2 Y3	Main	2
JCQ313000-1461	GP CHIP CRYST 14.31818 MHZ 30PPM 20pF	Y3 Y2	Replacement	0
PBE039540-2200	GP COND ELECT;22 uF 16V 20%	C157 C156 C158 C159 C189 C191 C192 C70	Main	10
PBE039542-2201	CHIP CAP.E 22 uF 16V 20% 85°C	C157 C156 C158 C159 C189 C191 C192 C70	Replacement	0
PXL410370-2200	GP CHIP CAP 22 pF 50V 5%	C133 C134	Main	2
PXL456470-2200	GP CHIP CAP 22 pF 50V 10%	C134 C133	Replacement	0
PXL439640-3340	GP CHIP CAP 0.33 uF 16V +80-20%	C81 C180	Main	2
PXL439670-3340	GP CHIP CAP 0.33 uF 50V +80-20%	C81 C180	Replacement	0
PZL456470-1050	GP CHIP CAP 1uF 50v 10% 1206 X7R	C220 C230	Main	2
PZL456460-1050	GP CHIP CAP 1uF 35V 10%	C220 C230	Replacement	0
QCF045010-0000	GP CHIP RES. 0 OHM 1/4W 5% 1206	D22	Main	1
QCL085010-0000	CHIP RES. 0 OHM JUMP WIRE	D22	Replacement	0
RCD114148-1011	GP DIODE CHIP BAV16W/IN4148W (SKYWELL)	D9 D10 D11 D12 D13 D14 D17 D18	Main	8
RCD114148-0010	DIODE SW 1N4148 SMT SOD-123 LF	D9 D10 D11 D12 D13 D14 D17 D18	Replacement	8
RCI001500-0001	GP IC 5P KP1500-50S5 TO263-5L KTC 150KHz	U31	Main	1
RCI002596-0001	IC 5P LM2596S-5.0 TO-263 NATIONAL	U31	Replacement	1
RCI502596-0001	GP IC 5P G5ULM2596-5.0 TO-263-5L GTM	U31	Replacement	1
RCI003541-1001	GP IC 8P APA3541-TRL SOP-8 HEADPHONE	U21	Main	1
RCI003541-0001	IC 8 PIN APA3541 SOP-8 HEADPHONE	U21	Replacement	1
RCI111718-0002	GP IC 3 PIN NCP1117ST18T3 1.8V SOT223 ON	U12	Main	1
RCI111718-1102	GP IC 3 PIN AP1117E18LA 1.8V SOT223	U12	Replacement	1
RCI111733-0002	GP IC 3 PIN NCP1117ST33T3 3.3V SOT223 ON	U14 U16 U25 U5	Main	4
RCI111733-1102	GP IC 3PIN AP1117E33LA SOT223 3.3V ANAC	U14 U16 U25 U5	Replacement	4
RCI502576-0001	GP IC 5P G5ULM2576-5.0 TO-263-5L GTM	U1	Main	1
RCI257600-0001	IC 5P 5V SIMPLE SWIT REG	U1	Replacement	1
RCI257600-0003	GP IC 5P LM2576D2TR4-005 D2PAK ON 5V 3A	U1	Replacement	1
RCN003904-0005	GP XISTR NPN PMBT3904 SOT23 PHILIPS	Q5 Q7 Q10 Q13 Q20 Q21 Q23 Q24 Q26 Q36 Q37	Main	11
RCN003904-0006	XISTR NPN MMBT3904-7-F SOT23 DIODES LF	Q5 Q7 Q10 Q13 Q20 Q21 Q23 Q24 Q26 Q36 Q37	Replacement	11
RCN203326-1001	XISTR NPN 2SC3326-A(TE85L) pb<1000ppm	Q22 Q25 Q29 Q31 Q33 Q34	Main	6
RCN203326-0001	XISTR NPN 2SC3326-A(TE85L)	Q22 Q25 Q29 Q31 Q33 Q34	Replacement	6
RCP003906-0002	GP XISTR PNP 3906 SOT23 General Purpose	Q14 Q30	Main	2
RCP003906-0003	XISTR PNP MMBT3906-7-F SOT23 DIODES LF	Q14 Q30	Replacement	2
RCZ005006-Z011	GP CHIP ZENER 5.6V 5% 0.5W (E2) SOD-123	D4 D1	Main	2
RCZ005006-0011	CHIP ZENER 5.6V 5% 0.5W (E2) SOD-123	D4 D1	Replacement	2
RCI005888-0002	GP IC 28P V5888S HSOP VAITECH 5-CH BTL	IC4	Replacement	2
RCI005869-0001	GP IC 28P AM5869S HSOP AMTEK 5-CH BTL	IC4	Main	1
RCM203018-1101	GP FET 2SK3018 30V/0.1A SC-70 ROHM	Q3 Q4	Main	2
RCM203018-1002	GP MOSFET 2SK3018 30V/0.1A SOT23 GR N-CH	Q3 Q4	Replacement	2
RCN203326-1001	XISTR NPN 2SC3326-A(TE85L) pb<1000ppm	Q13 Q17 Q18	Main	3
RCN203326-0001	XISTR NPN 2SC3326-A(TE85L)	Q13 Q17 Q18	Replacement	3
RCI260800-1001	GP IC 48 PIN MX26LV800BTC--55G TSOP MXIC	IC6	Main	1
RCI260800-0001	IC 48 PIN MX26LV800BTC--55 TSOP MXIC	IC6	Replacement	1
TPS220068-0801	OPEN FRAME SPS 2 O/P 68W LAD2985O21		Main	1
TPS220085-1002	OPEN FRAME 2 O/P 85W STARMEN:TOD0851212A		Replacement	1
ASL2HRT03-0001	TRAVERSE SANYO OPU+JELE MOTOR+OTHER PART		Main	1
WPC030342-0001	GP DVD TRAVERSE+PICK UP SANYO:SF-HD62FNV		Replacement	1
FBY106415-1001	GP BATTERY D10x44mm UM-4(AAA) 1.5V DESAY		Main	2
FBY106415-0005	GP BATTERY SUM-4 1.5V		Replacement	2

# FIRMWARE UPGRADE METHOD (Continued)

## ● VCTI-ISP-SETUP

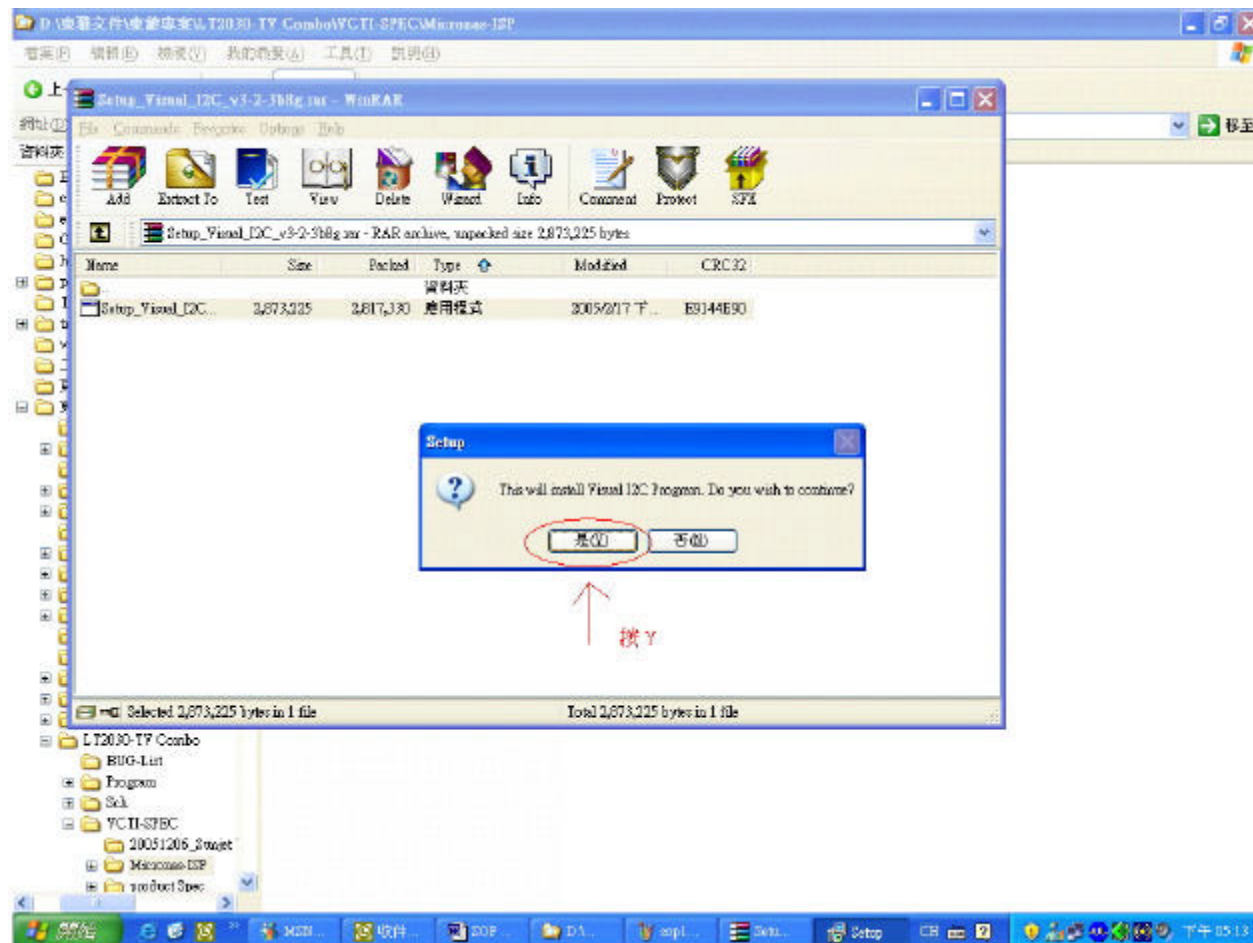
COPY root vcti49xyi to C:\

RUN Setup\_Visual\_I2C\_v3-2-3b8g.exe from Setup\_Visual\_I2C\_v3-2-3b8g.rar file.

名稱	大小	類型	修改日期
vcti49xyi		檔案資料夾	2006/1/3 上午 09:30
vcti49xyi_P144		檔案資料夾	2006/1/3 上午 09:30
Setup_LptDrv_v0202_XP_2000.zip	44 KB	WinZip 檔案	2005/9/8 上午 11:17
Setup_LptDrv_v020201_XP_2000.zip	77 KB	WinZip 檔案	2005/9/8 上午 11:17
Setup_LptDrvDev_v0202_XP_2000.zip	156 KB	WinZip 檔案	2005/9/8 上午 11:17
Setup_Visual_I2C_v3-2-3b8g.rar	2,752 KB	WinRAR archive	2005/9/8 上午 11:17

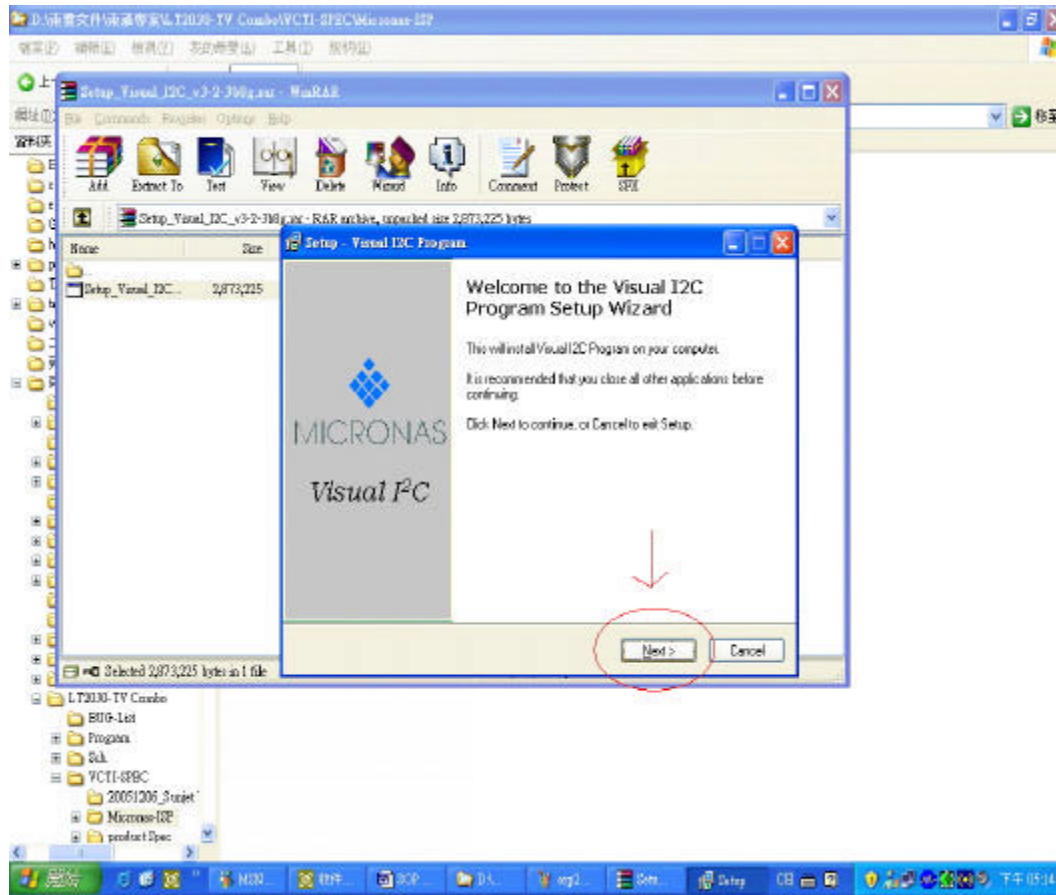
執行壓縮檔案內的程式。

Click "Y"

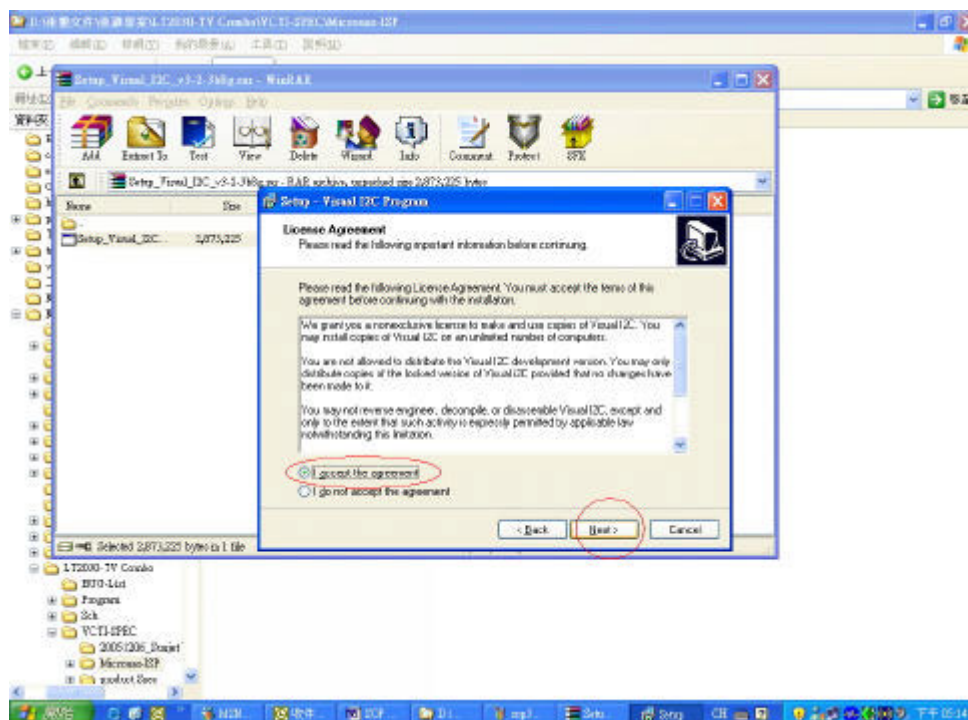


# FIRMWARE UPGRADE METHOD (Continued)

Click "Next"

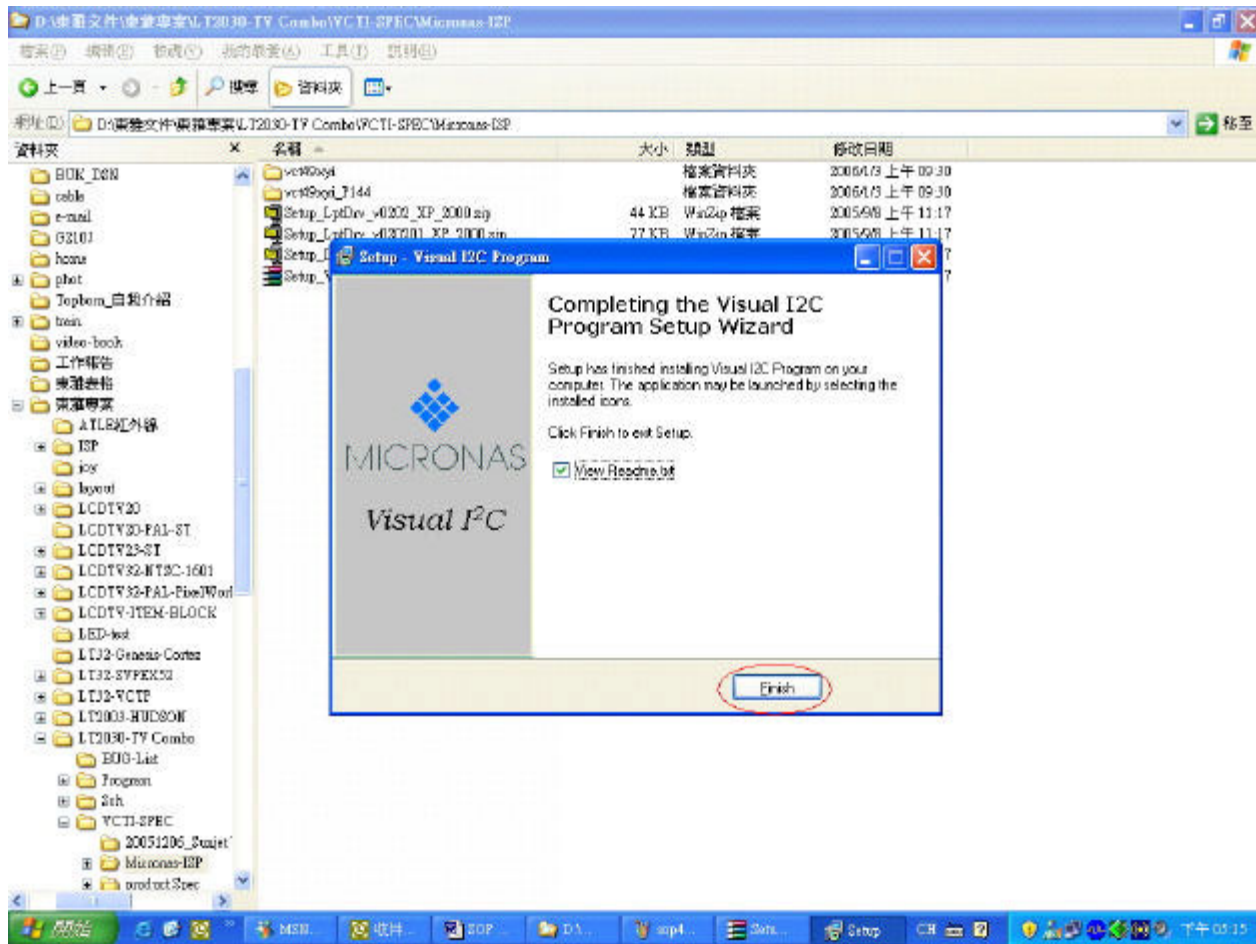


click "I accept..." & "Next"



# FIRMWARE UPGRADE METHOD (Contunued)

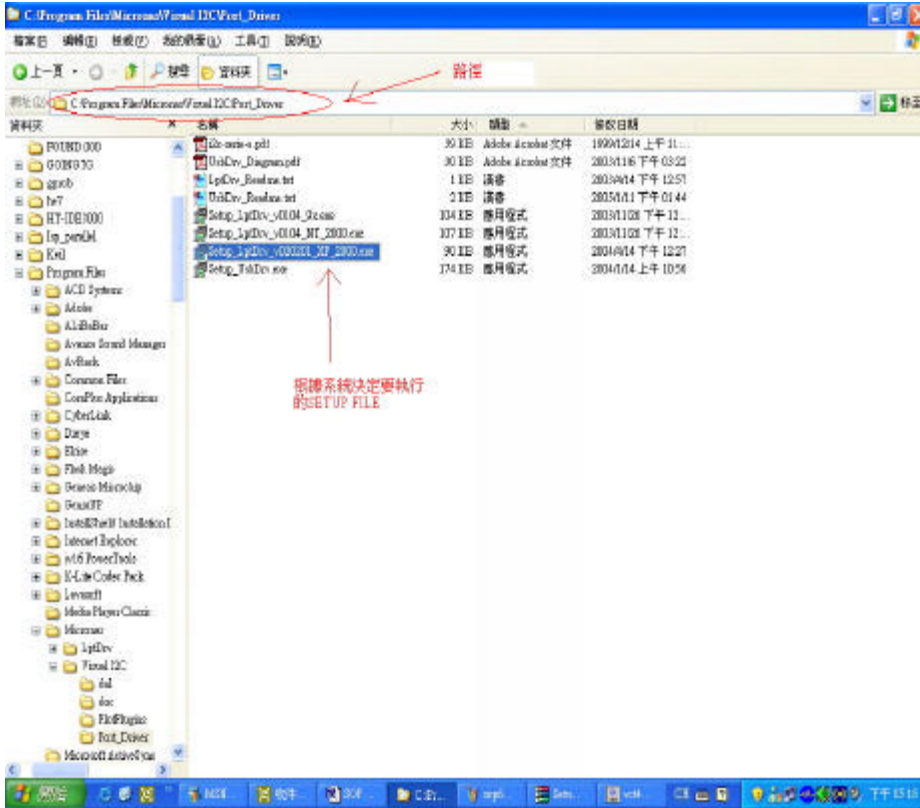
Click "Finish"



# FIRMWARE UPGRADE METHOD (Continued)

## ● COME PORT DRIVER SETUP

Find Path “C:\Program Files\Micronas\Visual I2C\Port\_Driver”, run correct file according to operation system, EX: run Setup\_LptDrv\_v020201\_XP\_2000.exe if operation system is Win\_XP or NT2000.



COME PORT DRIVER SETUP OK.

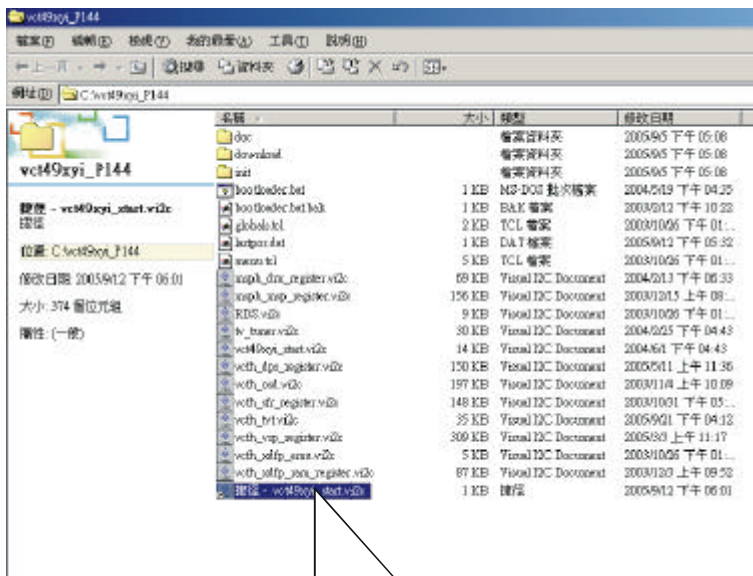
## FIRMWARE UPGRADE METHOD (Continued)

### ● HOW TO DO VCTI(LT2031) ISP.

- 1.LT2031 at Standby(open power don't press power key ).
- 2.plug PC & LT2031 connect.Show picture as below:



3. Run **vct49xyi\_start.vi2c** file from c:\vcti49xyi floor.

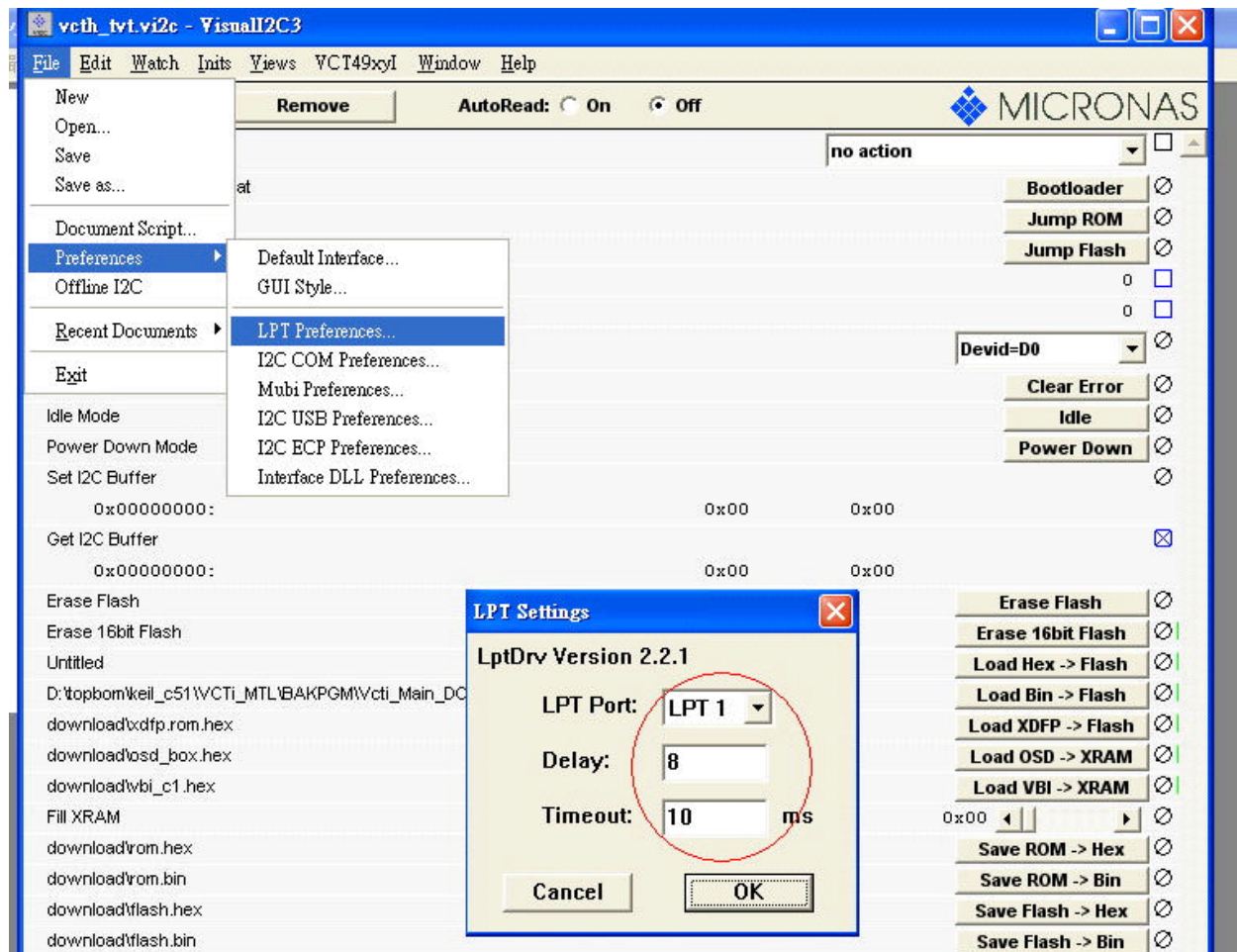


4.press **vct49xyi\_start.vi2c**



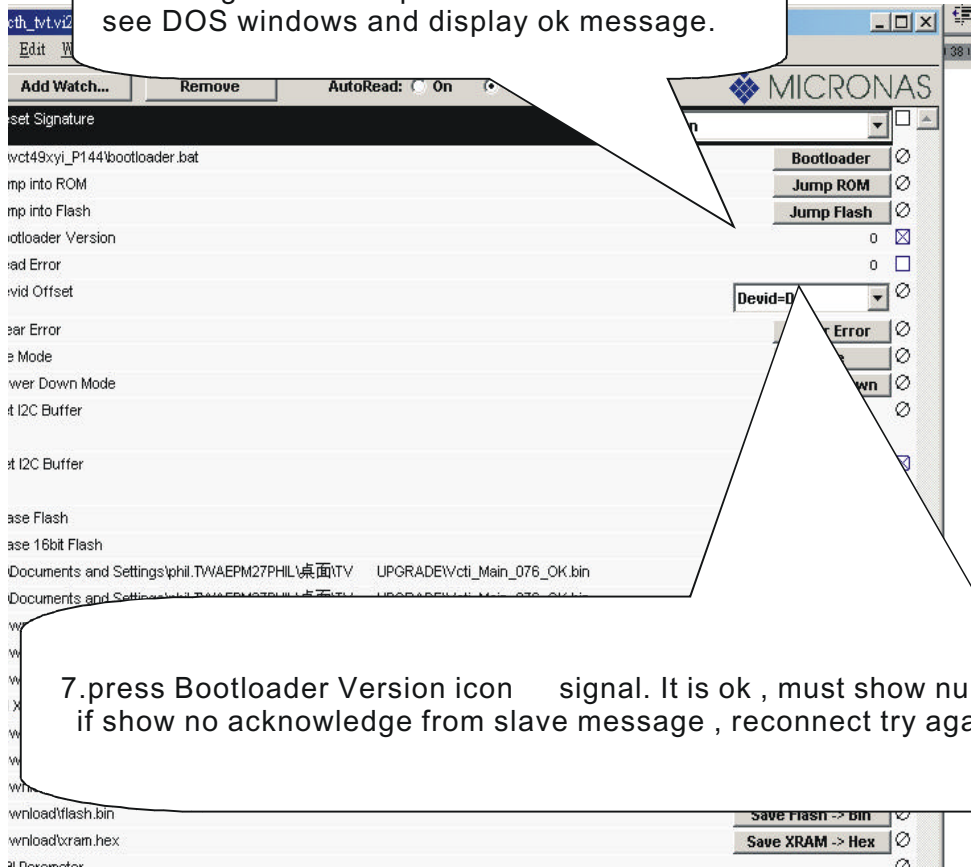
# FIRMWARE UPGRADE METHOD (Continued)

## 4. set parameter.



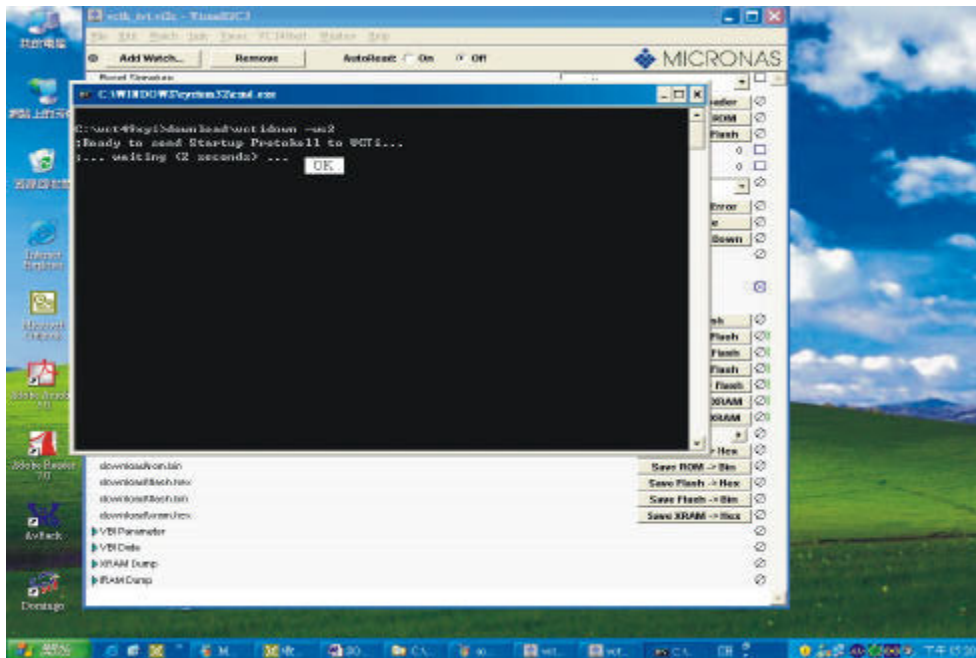
# FIRMWARE UPGRADE METHOD (Continued)

6. Waiting 2 seconds press Bootloader, can see DOS windows and display ok message.

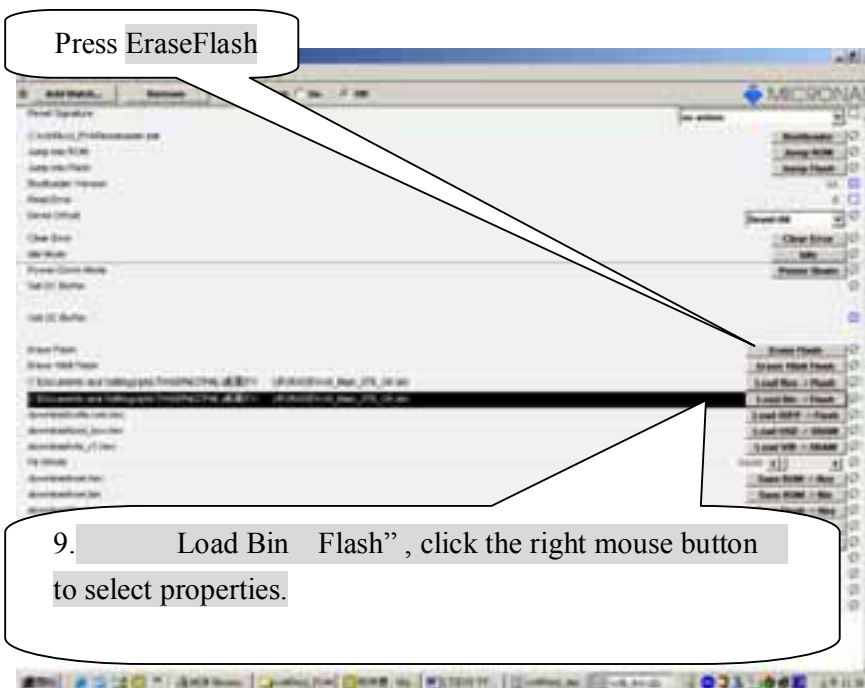


7. press Bootloader Version icon signal. It is ok, must show number 22. if show no acknowledge from slave message, reconnect try again.

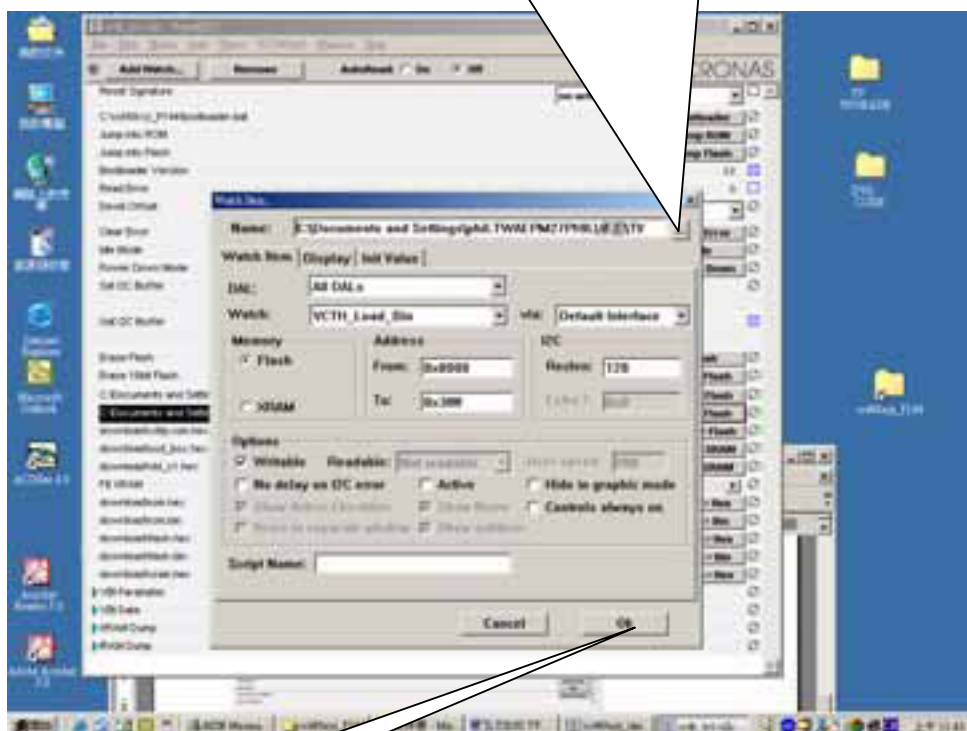
press BootLoader message if connect is ok



# FIRMWARE UPGRADE METHOD (Continued)



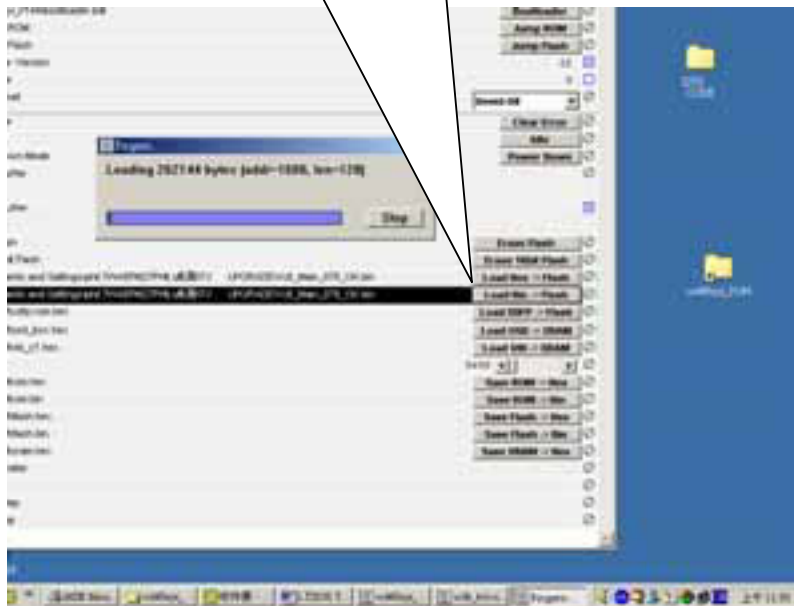
10.find ISP name path :(EX:Vcti\_Main\_076\_OK.bin)



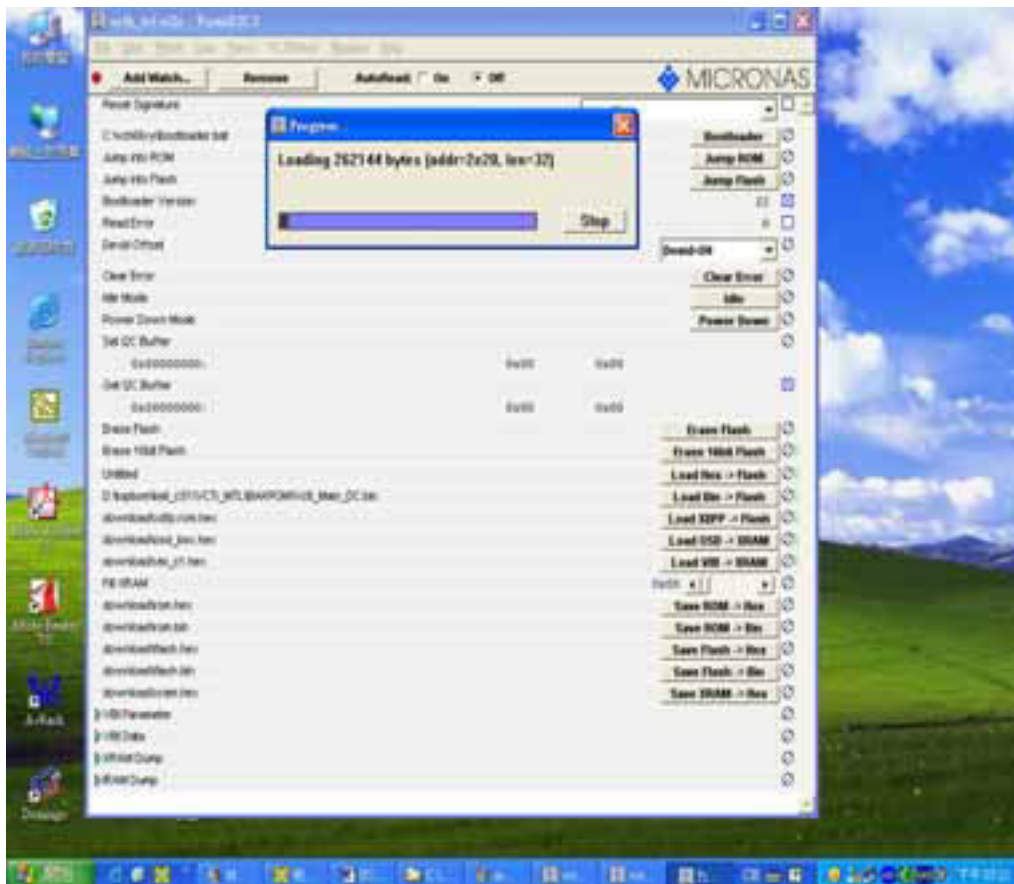
11.press OK

## FIRMWARE UPGRADE METHOD (Continued)

12. press Load Bin Flash icon.



about 130 seconds can finish. , ISP programming picture as below:

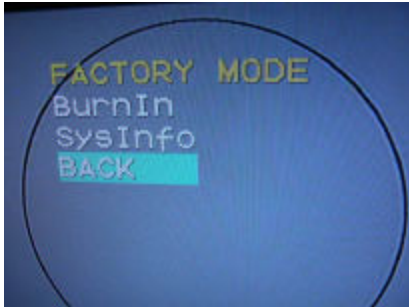


## FIRMWARE UPGRADE METHOD

13. ISP OK ,release all connect , open power.

HOW TO GET TV Verson:

14. at TV mode . press key pad VOL+ & CH- simultaneously and hold 3 seconds,panel will display FACTORY MODE.



15. use remote to select SysInfo icon . press Select key will display DVD & TV version.



**EXPLODED DRAWING**

LCD TV 20吋 COMBO 材料清單表	
料號	品名
1	9842706A001 I/P FUNCTION KEY COSMETIC
2	9841109A004 I/P DVD INSERT LABEL
3	9841103A001 I/P FRONT COVER AIR GRILL
4	9841100A001 I/P SPEAKER BOX RIGHT
5	9841100A002 I/P SPEAKER BOX LEFT
6	9841103A001 I/P FUNCTION KEY AIR GRILL
7	9841103A001 I/P IR LENS I.C.
8	9841103A001 I/P LED LENS P.M.A.
9	9841103A001 I/P POWER KEY AIR
10	9841103A001 I/P LCD PANEL SWITCH LABEL (V1.170)
11	9841103A001 I/P PANEL MOUNT BASE SHEET
12	9841103A001 I/P FACE
13	9841103A001 I/P LEFT BRACKET SHEET
14	9841103A001 I/P RIGHT BRACKET SHEET
15	9841103A001 I/P FRONT COVER SHEET
16	9841103A001 I/P MAIN BEAVED COVER N.T.K. 9PHE
17	9841103A001 I/P MAIN BEAVED COVER N.T.K. 9PHE
18	9841103A001 I/P MAIN BEAVED COVER N.T.K. 9PHE
19	9841103A001 I/P MAIN BEAVED COVER N.T.K. 9PHE
20	9841103A001 I/P MAIN BEAVED COVER N.T.K. 9PHE
21	9841103A001 I/P MAIN BEAVED COVER N.T.K. 9PHE
22	9841103A001 I/P MAIN BEAVED COVER N.T.K. 9PHE
23	9841103A001 I/P MAIN BEAVED COVER N.T.K. 9PHE
24	9841103A001 I/P MAIN BEAVED COVER N.T.K. 9PHE
25	9841103A001 I/P MAIN BEAVED COVER N.T.K. 9PHE
26	9841103A001 I/P MAIN BEAVED COVER N.T.K. 9PHE
27	9841103A001 I/P MAIN BEAVED COVER N.T.K. 9PHE
28	9841103A001 I/P MAIN BEAVED COVER N.T.K. 9PHE
29	9841103A001 I/P MAIN BEAVED COVER N.T.K. 9PHE
30	9841103A001 I/P MAIN BEAVED COVER N.T.K. 9PHE
31	9841103A001 I/P MAIN BEAVED COVER N.T.K. 9PHE
32	9841103A001 I/P MAIN BEAVED COVER N.T.K. 9PHE
33	9841103A001 I/P MAIN BEAVED COVER N.T.K. 9PHE
34	9841103A001 I/P MAIN BEAVED COVER N.T.K. 9PHE
35	9841103A001 I/P MAIN BEAVED COVER N.T.K. 9PHE
36	9841103A001 I/P MAIN BEAVED COVER N.T.K. 9PHE
37	9841103A001 I/P MAIN BEAVED COVER N.T.K. 9PHE
38	9841103A001 I/P MAIN BEAVED COVER N.T.K. 9PHE
39	9841103A001 I/P MAIN BEAVED COVER N.T.K. 9PHE
40	9841103A001 I/P MAIN BEAVED COVER N.T.K. 9PHE
41	9841103A001 I/P MAIN BEAVED COVER N.T.K. 9PHE
42	9841103A001 I/P MAIN BEAVED COVER N.T.K. 9PHE
43	9841103A001 I/P MAIN BEAVED COVER N.T.K. 9PHE
44	9841103A001 I/P MAIN BEAVED COVER N.T.K. 9PHE
45	9841103A001 I/P MAIN BEAVED COVER N.T.K. 9PHE
46	9841103A001 I/P MAIN BEAVED COVER N.T.K. 9PHE
47	9841103A001 I/P MAIN BEAVED COVER N.T.K. 9PHE
48	9841103A001 I/P MAIN BEAVED COVER N.T.K. 9PHE
49	9841103A001 I/P MAIN BEAVED COVER N.T.K. 9PHE
50	9841103A001 I/P MAIN BEAVED COVER N.T.K. 9PHE
51	9841103A001 I/P MAIN BEAVED COVER N.T.K. 9PHE
52	9841103A001 I/P MAIN BEAVED COVER N.T.K. 9PHE
53	9841103A001 I/P MAIN BEAVED COVER N.T.K. 9PHE
54	9841103A001 I/P MAIN BEAVED COVER N.T.K. 9PHE
55	9841103A001 I/P MAIN BEAVED COVER N.T.K. 9PHE
56	9841103A001 I/P MAIN BEAVED COVER N.T.K. 9PHE
57	9841103A001 I/P MAIN BEAVED COVER N.T.K. 9PHE
58	9841103A001 I/P MAIN BEAVED COVER N.T.K. 9PHE
59	9841103A001 I/P MAIN BEAVED COVER N.T.K. 9PHE
60	9841103A001 I/P MAIN BEAVED COVER N.T.K. 9PHE
61	9841103A001 I/P MAIN BEAVED COVER N.T.K. 9PHE
62	9841103A001 I/P MAIN BEAVED COVER N.T.K. 9PHE
63	9841103A001 I/P MAIN BEAVED COVER N.T.K. 9PHE
64	9841103A001 I/P MAIN BEAVED COVER N.T.K. 9PHE
65	9841103A001 I/P MAIN BEAVED COVER N.T.K. 9PHE
66	9841103A001 I/P MAIN BEAVED COVER N.T.K. 9PHE
67	9841103A001 I/P MAIN BEAVED COVER N.T.K. 9PHE
68	9841103A001 I/P MAIN BEAVED COVER N.T.K. 9PHE
69	9841103A001 I/P MAIN BEAVED COVER N.T.K. 9PHE
70	9841103A001 I/P MAIN BEAVED COVER N.T.K. 9PHE
71	9841103A001 I/P MAIN BEAVED COVER N.T.K. 9PHE
72	9841103A001 I/P MAIN BEAVED COVER N.T.K. 9PHE
73	9841103A001 I/P MAIN BEAVED COVER N.T.K. 9PHE
74	9841103A001 I/P MAIN BEAVED COVER N.T.K. 9PHE
75	9841103A001 I/P MAIN BEAVED COVER N.T.K. 9PHE
76	9841103A001 I/P MAIN BEAVED COVER N.T.K. 9PHE
77	9841103A001 I/P MAIN BEAVED COVER N.T.K. 9PHE
78	9841103A001 I/P MAIN BEAVED COVER N.T.K. 9PHE
79	9841103A001 I/P MAIN BEAVED COVER N.T.K. 9PHE
80	9841103A001 I/P MAIN BEAVED COVER N.T.K. 9PHE
81	9841103A001 I/P MAIN BEAVED COVER N.T.K. 9PHE
82	9841103A001 I/P MAIN BEAVED COVER N.T.K. 9PHE
83	9841103A001 I/P MAIN BEAVED COVER N.T.K. 9PHE
84	9841103A001 I/P MAIN BEAVED COVER N.T.K. 9PHE
85	9841103A001 I/P MAIN BEAVED COVER N.T.K. 9PHE
86	9841103A001 I/P MAIN BEAVED COVER N.T.K. 9PHE
87	9841103A001 I/P MAIN BEAVED COVER N.T.K. 9PHE
88	9841103A001 I/P MAIN BEAVED COVER N.T.K. 9PHE
89	9841103A001 I/P MAIN BEAVED COVER N.T.K. 9PHE
90	9841103A001 I/P MAIN BEAVED COVER N.T.K. 9PHE
91	9841103A001 I/P MAIN BEAVED COVER N.T.K. 9PHE
92	9841103A001 I/P MAIN BEAVED COVER N.T.K. 9PHE
93	9841103A001 I/P MAIN BEAVED COVER N.T.K. 9PHE
94	9841103A001 I/P MAIN BEAVED COVER N.T.K. 9PHE
95	9841103A001 I/P MAIN BEAVED COVER N.T.K. 9PHE
96	9841103A001 I/P MAIN BEAVED COVER N.T.K. 9PHE
97	9841103A001 I/P MAIN BEAVED COVER N.T.K. 9PHE
98	9841103A001 I/P MAIN BEAVED COVER N.T.K. 9PHE
99	9841103A001 I/P MAIN BEAVED COVER N.T.K. 9PHE
100	9841103A001 I/P MAIN BEAVED COVER N.T.K. 9PHE

搜尋圖面中的零件時~  
上面的數字小~下面的數字大  
左邊的數字小~右邊的數字大